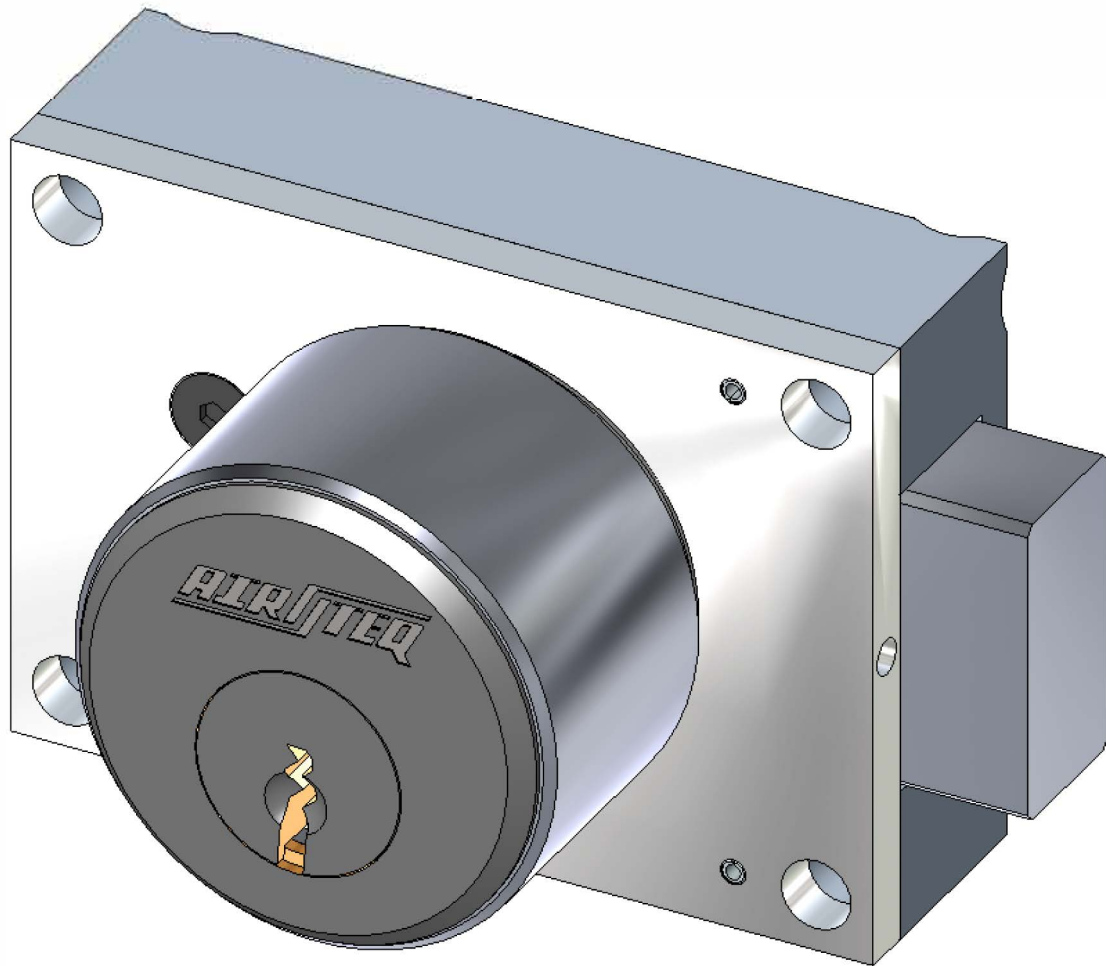




AIRTEQ
www.airteq.com
800-466-3007

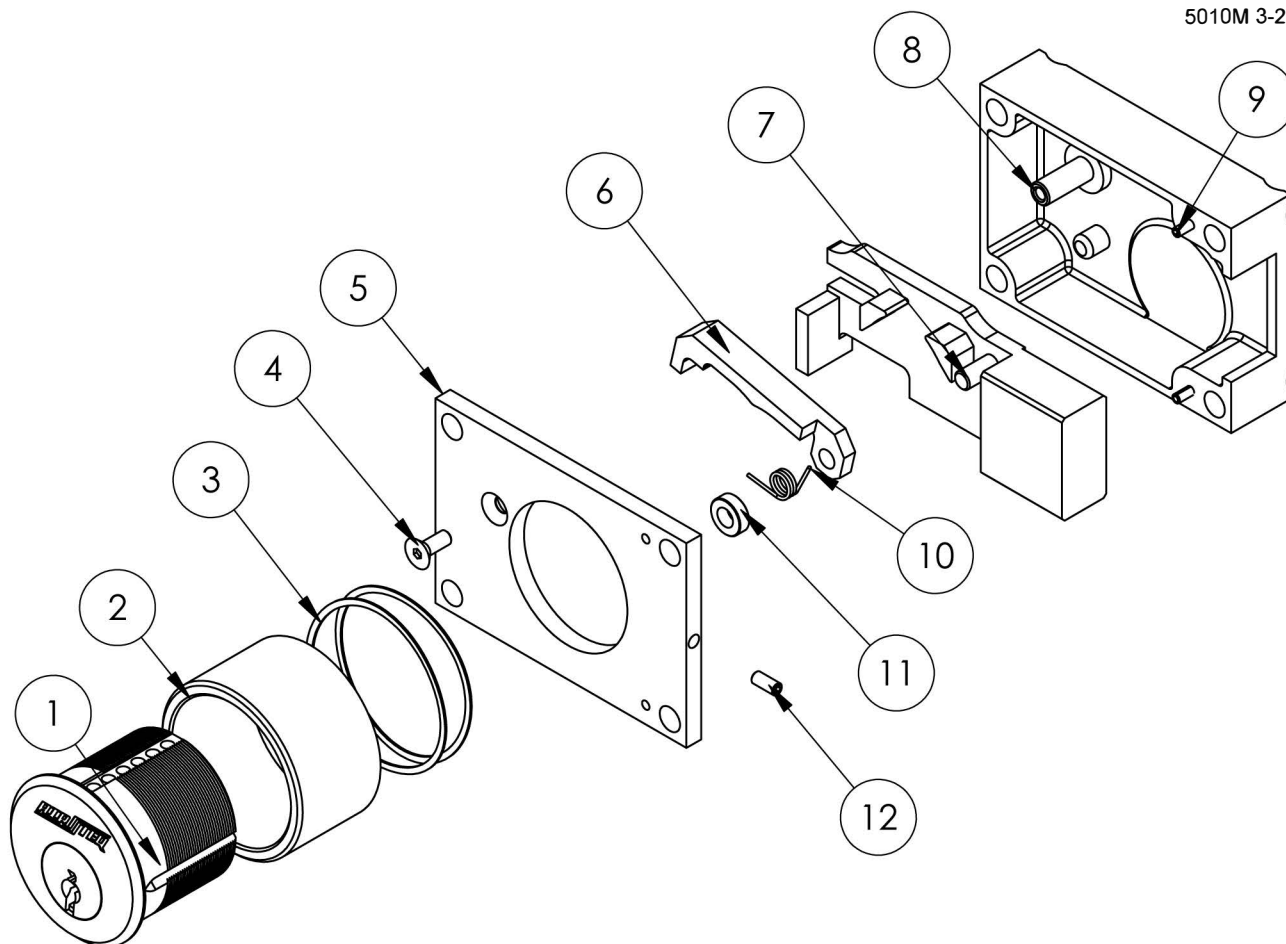
5010M DEADBOLT

5010M 3-29-06



5010M SERIES DEADBOLT

5010M 3-28-06



ITEM	QTY	PART NUMBER	DESCRIPTION
1	1	MOGUL CYLINDER	AIRTEQ MOGUL CYLINDER (SHOWN) (OR) ASSA MOGUL CYLINDER
2	1	216-5017-000 216-5017-072	SECURITY RING (OR) ASSA MOGUL CYLINDER RING
3	2	216-5017-033	WAVE SPRING, SMALLEY #11042-01
4	1	310-0000-009	SCREW, FH, SOC., 10-32 X 1/2
5	1	216-5010-102	COVER 5010M, C'SINK BOTH SIDES
6	1	216-5010-076 216-5010-082	DEADLATCH, R.H. (SHOWN) (OR) DEAD LATCH L.H.
7	1	146-5010-012 146-5010-013 146-5010-014 146-5010-015	LATCH WELDMENT, R.H. (SHOWN) (OR) LATCH WELDMENT L.H. (OR) LATCH WELDMENT, R.H., EXTENDED (OR) LATCH WELDMENT, L.H., EXTENDED
8	1	146-5010-018 146-5010-019	CASE, RH, W/C'SINKS (OR) CASE, L.H., W/C'SINKS
9	2	316-0000-059	ROLL PIN 1/8 X 1/2 LONG
10	1	216-5010-081	SPRING LATCH
11	1	319-0000-090	SPACER .252 X 1/2 X 3/16 LG
12	1	310-0832-020	SET SCREW, 8-32 X .375

MAINTENANCE INSTRUCTIONS

AIRTEQ

MECHANICAL LEVER TUMBLER LOCKS

All Airteq mechanical lever tumbler locks are designed for years of trouble-free use. No periodic maintenance or lubrication is recommended. If, however, a lock fails to perform properly, the following procedure is recommended.

- 1) Remove the lock cover.
- 2) Carefully remove the tumbler stack. Mark each tumbler position on the tumbler with a permanent marker for ease of reassembly.
- 3) Remove the remaining components.
- 4) Clean the case, cover and other components with alcohol or acetone and a clean lint free cloth.
- 5) Lightly lubricate the following areas with a multi-purpose synthetic lubricant with teflon, similar to "Synco Super Lube with Teflon":
 - a) All machined surfaces at the bottom of the lock case.
 - b) The I.D. of the key cylinder hole in the case.
 - c) The I.D. of the key cylinder hole in the cover and the counterbore around it.
- 6) Carefully reassemble the lock. Be sure that the tumbler stack has been properly reassembled.
- 7) 5070 Series locks only:

Lubricate the surfaces where the actuator pawl and slide weldment interface.

WARNING:

- 1) Never use WD40 or similar silicone based lubricants.
- 2) Never use graphite powder as a lubricant.
- 3) Never lubricate the lever tumblers.

KEYS AND LEVER TUMBLERS

- 1) Key wear can cause improper operation of the lock and may damage the lock's lever tumblers. Keys in constant use should be periodically compared to a similar new key. When grooves due to wear are noted in the steps on the key bit, the old key should be replaced.
- 2) When rekeying is performed, new tumbler stacks should be purchased as a set including a new key. This enables Airteq to maintain complete keying records.