



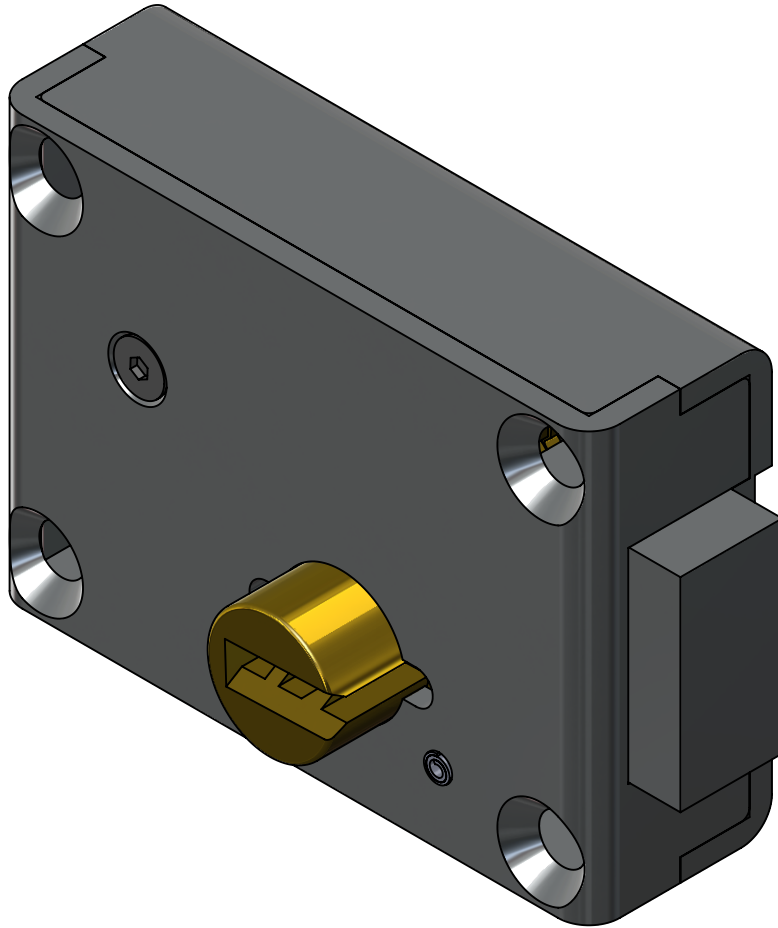
AIRTEQ

www.airteq.com

800-466-3007

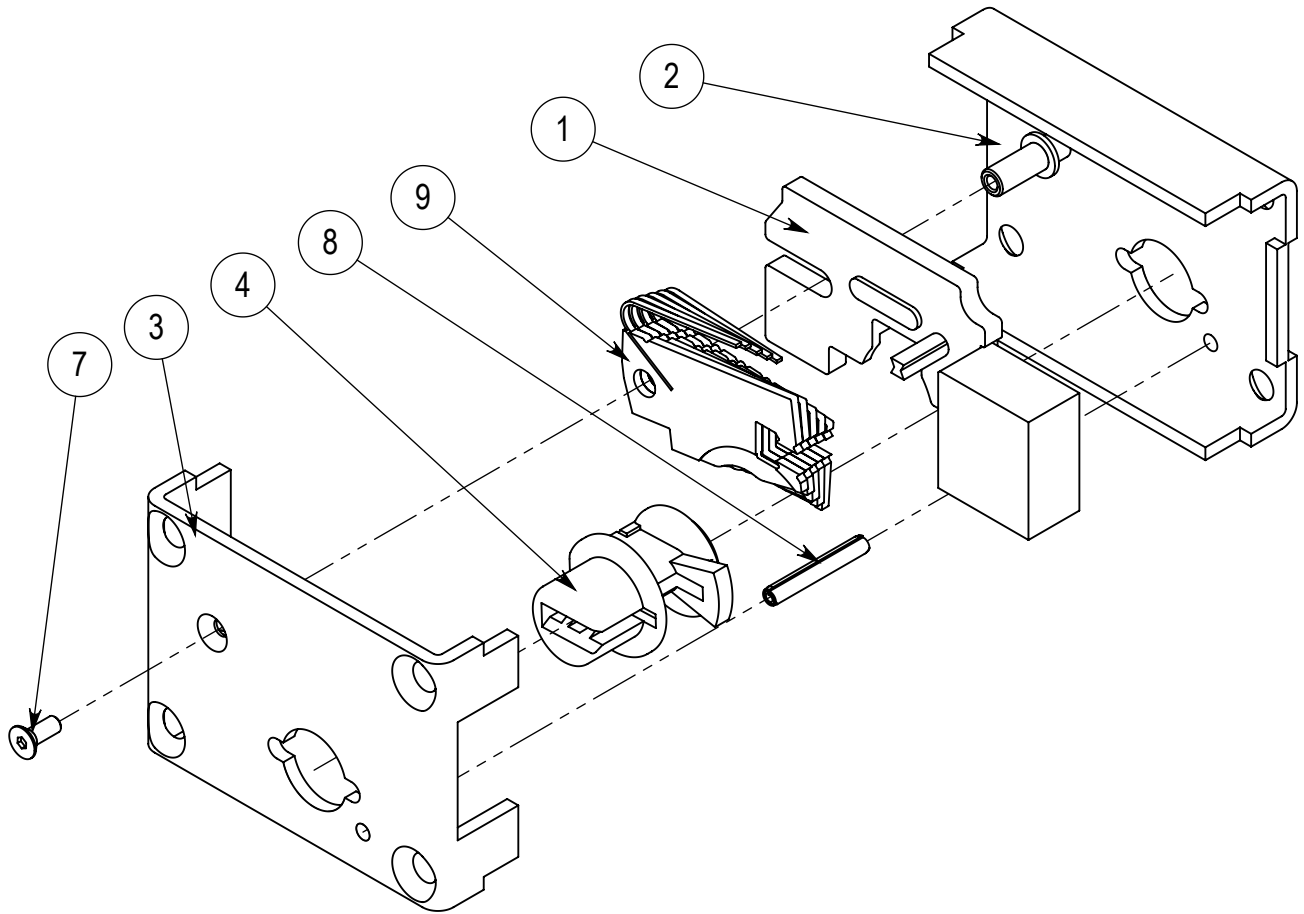
5010/5016 SERIES DEADBOLT

5010 8-19



5010/5016 SERIES DEADBOLT

5010 8-19



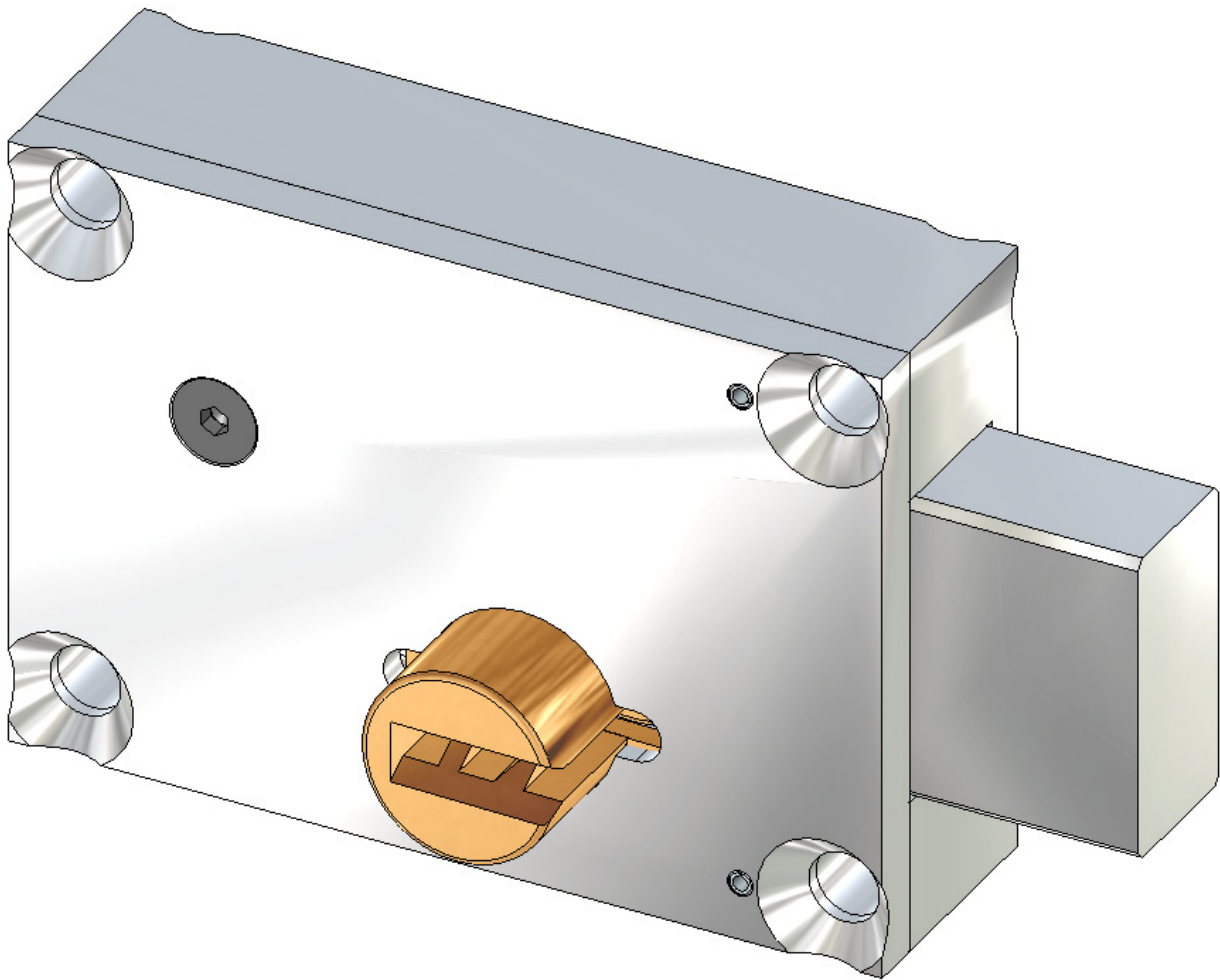
ITEM NO.	PART NUMBER	DESCRIPTION	5010-RH-K1S	5010-LH-K1S	5010-K2S
1	146-5010-005-BB	Dead Bolt Weldment, Bent Body	1	1	1
2	146-5010-B02	5010 Bent Body Case Assembly	1	1	1
3	150-5010-B01	5010 Bent Lock Body Cover Weldment	1	1	1
4	216-5001-002	CYLINDER, K1S, 5010 STYLE B KEYWAY	1	-	-
5	216-5001-003	KEY CYLINDER, KBS, 5010 STYLE B KEYWAY	-	-	1
6	216-5001-031	Key Cylinder, K1S, 5010, Case Side "B" Keyway	-	1	-
7	310-0000-009	SCREW, FH, SOC., 10-32 X 1/2	1	1	1
8	316-5010-000	Coiled Spring Pin	1	1	1
9	449-5010-000	5010 TUMBLER KIT (5 TUMBLER)	1	1	1



AIRTEQ
www.airteq.com
800-466-3007

5010/5016 SERIES DEADBOLT

5010 3-22-05

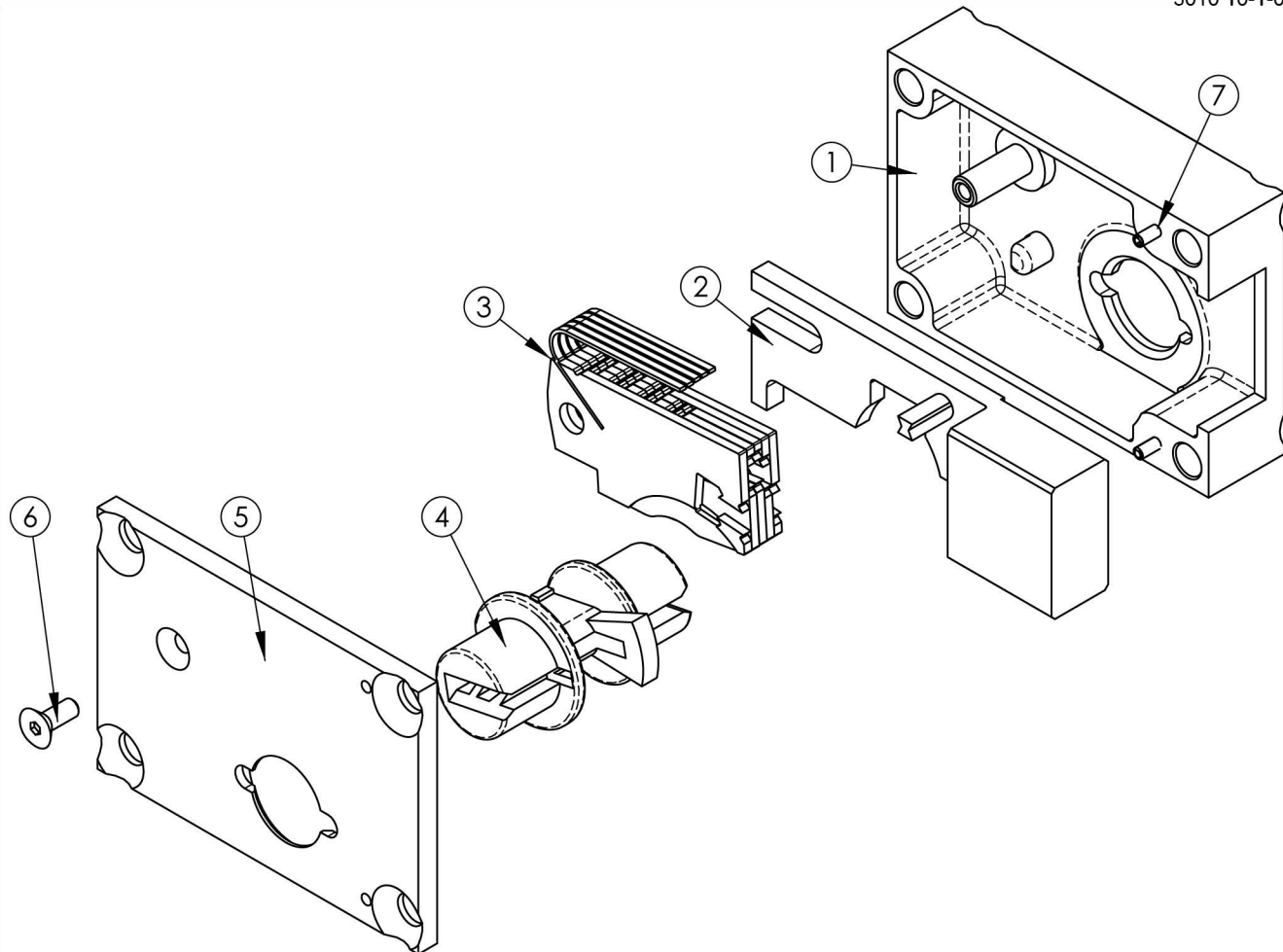




AIRTEQ
www.airteq.com
800-466-3007

5010/5016 SERIES DEADBOLT

5010 10-1-07



ITEM	QTY	PART NUMBER	DESCRIPTION
1	1	146-5010-003 146-5010-002	CASE, R.H. (SHOWN) (OR) CASE, L.H.
2	1	146-5010-005 146-5010-004 146-5010-007 146-5010-006	BOLT, RH (SHOWN) BOLT, RH, EXTENDED BOLT, LH BOLT, LH, EXTENDED
3	1	449-5010-000 449-5016-000	5010 TUMBLER KIT (5 TUMBLER) (OR) 5016 TUMBLER KIT (6 TUMBLERS)
4	1	216-5001-003 216-5001-002 216-5010-002 216-5010-001 216-5010-104 216-5001-009	KEY CYLINDER, "B" KEYWAY, KEYED BOTH SIDES (SHOWN) (OR) KEY CYLINDER, "B" KEYWAY, KEYED ONE SIDE (OR) KEY CYLINDER, "A" KEYWAY, KEYED BOTH SIDES (OR) KEY CYLINDER, "A" KEYWAY, KEYED ONE SIDE (OR) KEY CYLINDER, "F" KEYWAY, KEYED BOTH SIDES (OR) KEY CYLINDER, "F" KEYWAYS, KEYED ONE SIDE
5	1	216-5010-031 216-5010-030	COVER, R.H. (SHOWN) (OR) COVER, L.H.
6	1	310-0000-009	SCREW, FH, SOC., 10-32 X 1/2
7	2	316-0000-059	ROLL PIN 1/8 X 1/2 LONG

MAINTENANCE INSTRUCTIONS
AIRTEQ
MECHANICAL LEVER TUMBLER LOCKS

All Airteq mechanical lever tumbler locks are designed for years of trouble-free use. No periodic maintenance or lubrication is recommended. If, however, a lock fails to perform properly, the following procedure is recommended.

- 1) Remove the lock cover.
- 2) Carefully remove the tumbler stack. Mark each tumbler position on the tumbler with a permanent marker for ease of reassembly.
- 3) Remove the remaining components.
- 4) Clean the case, cover and other components with alcohol or acetone and a clean lint free cloth.
- 5) Lightly lubricate the following areas with a multi-purpose synthetic lubricant with teflon, similar to "Synco Super Lube with Teflon":
 - a) All machined surfaces at the bottom of the lock case.
 - b) The I.D. of the key cylinder hole in the case.
 - c) The I.D. of the key cylinder hole in the cover and the counterbore around it.
- 6) Carefully reassemble the lock. Be sure that the tumbler stack has been properly reassembled.
- 7) 5070 Series locks only:

Lubricate the surfaces where the actuator pawl and slide weldment interface.

WARNING:

- 1) Never use WD40 or similar silicone based lubricants.
- 2) Never use graphite powder as a lubricant.
- 3) Never lubricate the lever tumblers.

KEYS AND LEVER TUMBLERS

- 1) Key wear can cause improper operation of the lock and may damage the lock's lever tumblers. Keys in constant use should be periodically compared to a similar new key. When grooves due to wear are noted in the steps on the key bit, the old key should be replaced.
- 2) When rekeying is performed, new tumbler stacks should be purchased as a set including a new key. This enables Airteq to maintain complete keying records.