



**AIRTEQ SYSTEMS**

[www.airteqsystems.com](http://www.airteqsystems.com)

800-466-3007

## 5017B SERIES LATCH

5017B 3-30-06





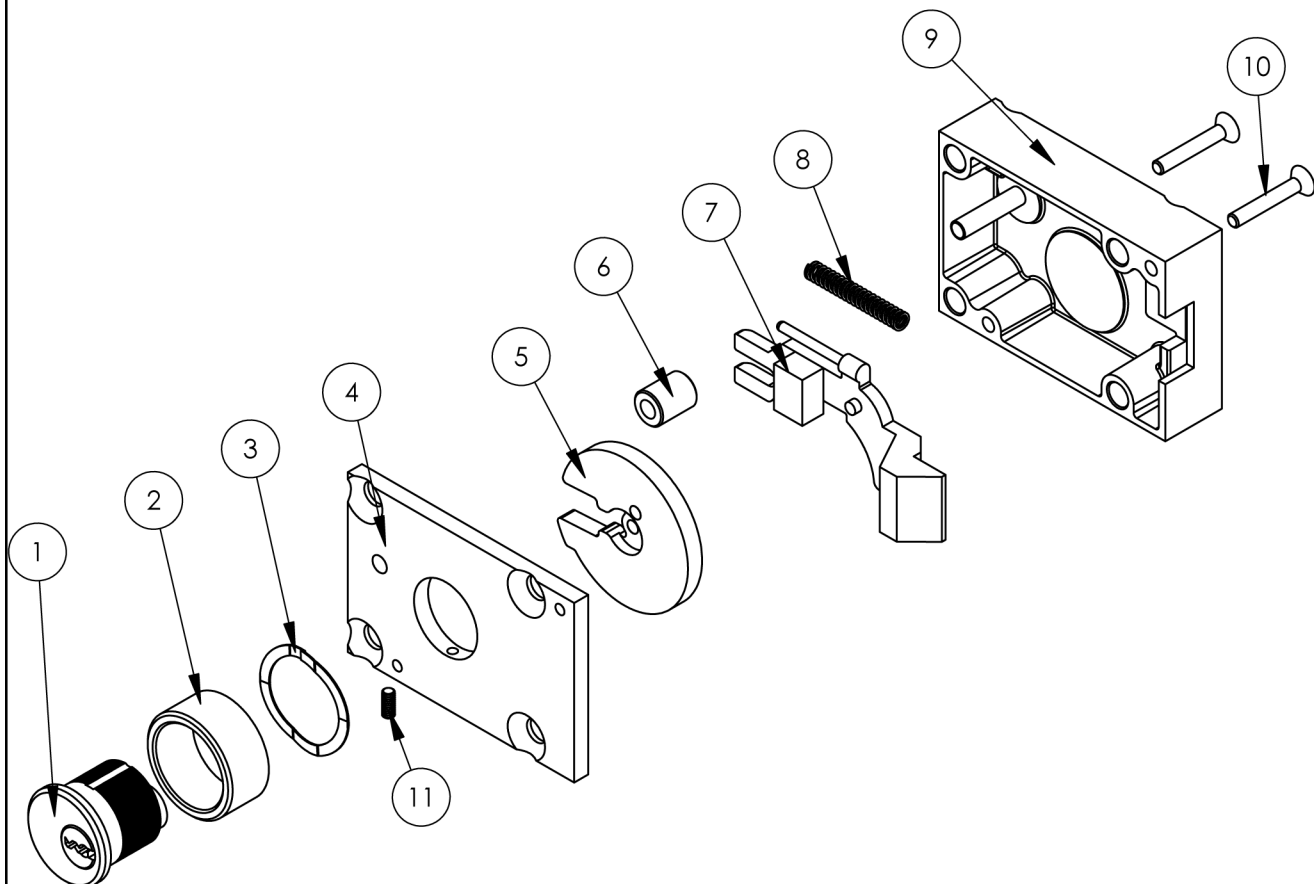
**AIRTEQ SYSTEMS**

www.airteqsystems.com

800-466-3007

## 5017B SERIES LATCH

5017B 8-16-06



ITEM NO.	QTY	PART NUMBER	DESCRIPTION
1	1	-----	BUILDERS HARDWARE CYLINDER
2	1	216-5017-053	SECURITY RING, MEDECO/ASSA/SHLAGE
3	1	315-0000-048	WAVE SPRING, SMALLEY #SSR-0150
4	1	216-5017-047	COVER, 5017B W/C'SINKS
5	1	146-5017-011	ASSY, CAM TRAILER
6	1	216-5017-005	LATCH SPACER
7	1	146-5017-001 146-5017-000 146-5017-010 146-5017-013	LATCH, REVERSE BEVEL (SHOWN) (OR) LATCH, STANDARD BEVEL (OR) LATCH, REVERSE BEVEL, EXTENDED (OR) LATCH, STANDARD BEVEL, EXTENDED
8	1	216-5017-034	SPRING
9	1	146-5017-015	CASE W/C'SINKS
10	2	310-1032-018	SCREW, FH SOC., 10-32 X 1 1/4
11	1	310-0832-020	SET SCREW, 8-32 X 3/8

# **MAINTENANCE INSTRUCTIONS**

## **AIRTEQ**

### **MECHANICAL LEVER TUMBLER LOCKS**

All Airteq mechanical lever tumbler locks are designed for years of trouble-free use. No periodic maintenance or lubrication is recommended. If, however, a lock fails to perform properly, the following procedure is recommended.

- 1) Remove the lock cover.
- 2) Carefully remove the tumbler stack. Mark each tumbler position on the tumbler with a permanent marker for ease of reassembly.
- 3) Remove the remaining components.
- 4) Clean the case, cover and other components with alcohol or acetone and a clean lint free cloth.
- 5) Lightly lubricate the following areas with a multi-purpose synthetic lubricant with teflon, similar to "Synco Super Lube with Teflon":
  - a) All machined surfaces at the bottom of the lock case.
  - b) The I.D. of the key cylinder hole in the case.
  - c) The I.D. of the key cylinder hole in the cover and the counterbore around it.
- 6) Carefully reassemble the lock. Be sure that the tumbler stack has been properly reassembled.
- 7) 5070 Series locks only:

Lubricate the surfaces where the actuator pawl and slide weldment interface.

#### **WARNING:**

- 1) Never use WD40 or similar silicone based lubricants.
- 2) Never use graphite powder as a lubricant.
- 3) Never lubricate the lever tumblers.

#### **KEYS AND LEVER TUMBLERS**

- 1) Key wear can cause improper operation of the lock and may damage the lock's lever tumblers. Keys in constant use should be periodically compared to a similar new key. When grooves due to wear are noted in the steps on the key bit, the old key should be replaced.
- 2) When rekeying is performed, new tumbler stacks should be purchased as a set including a new key. This enables Airteq to maintain complete keying records.