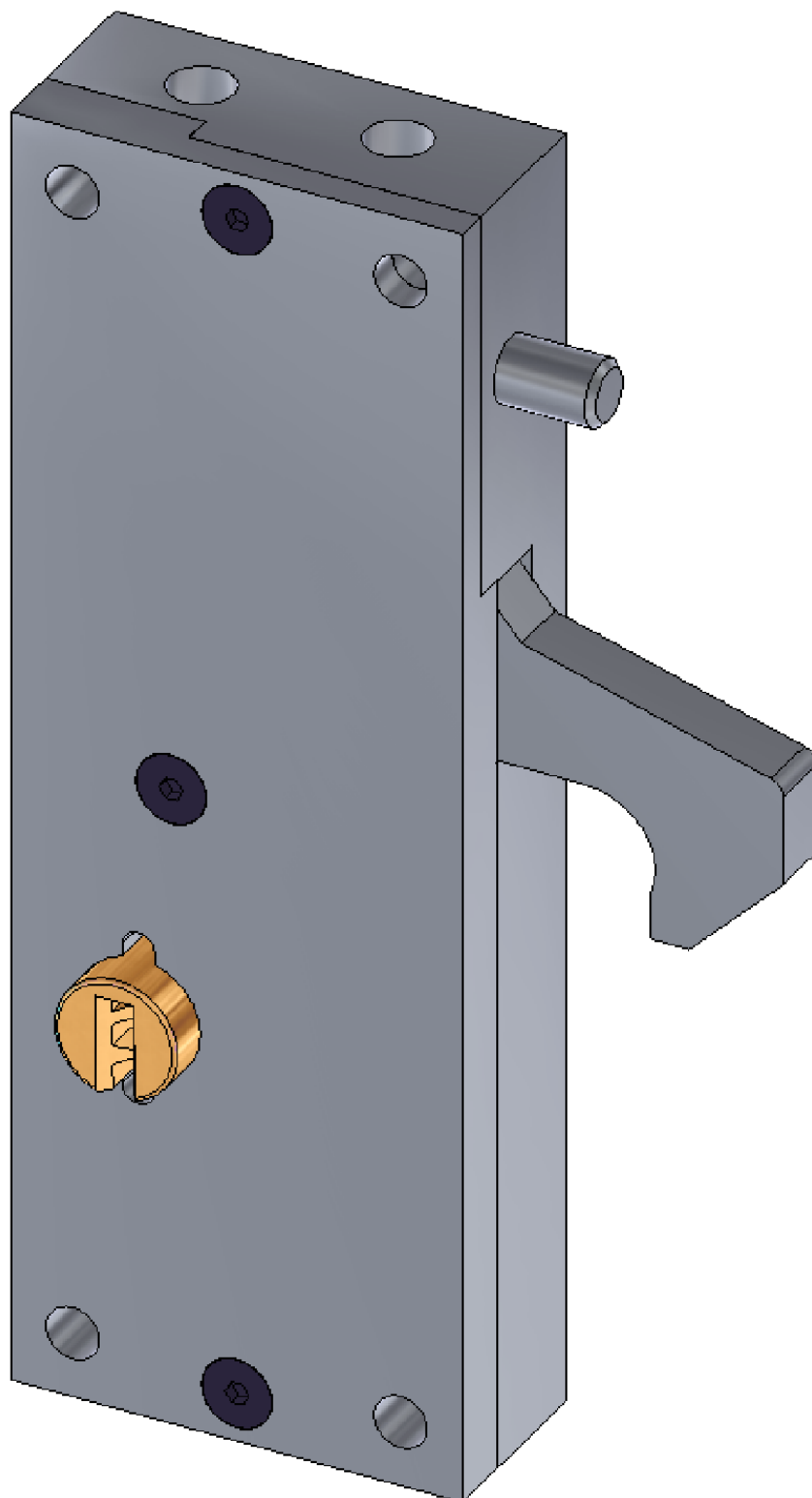




AIRTEQ
www.Airteq.com

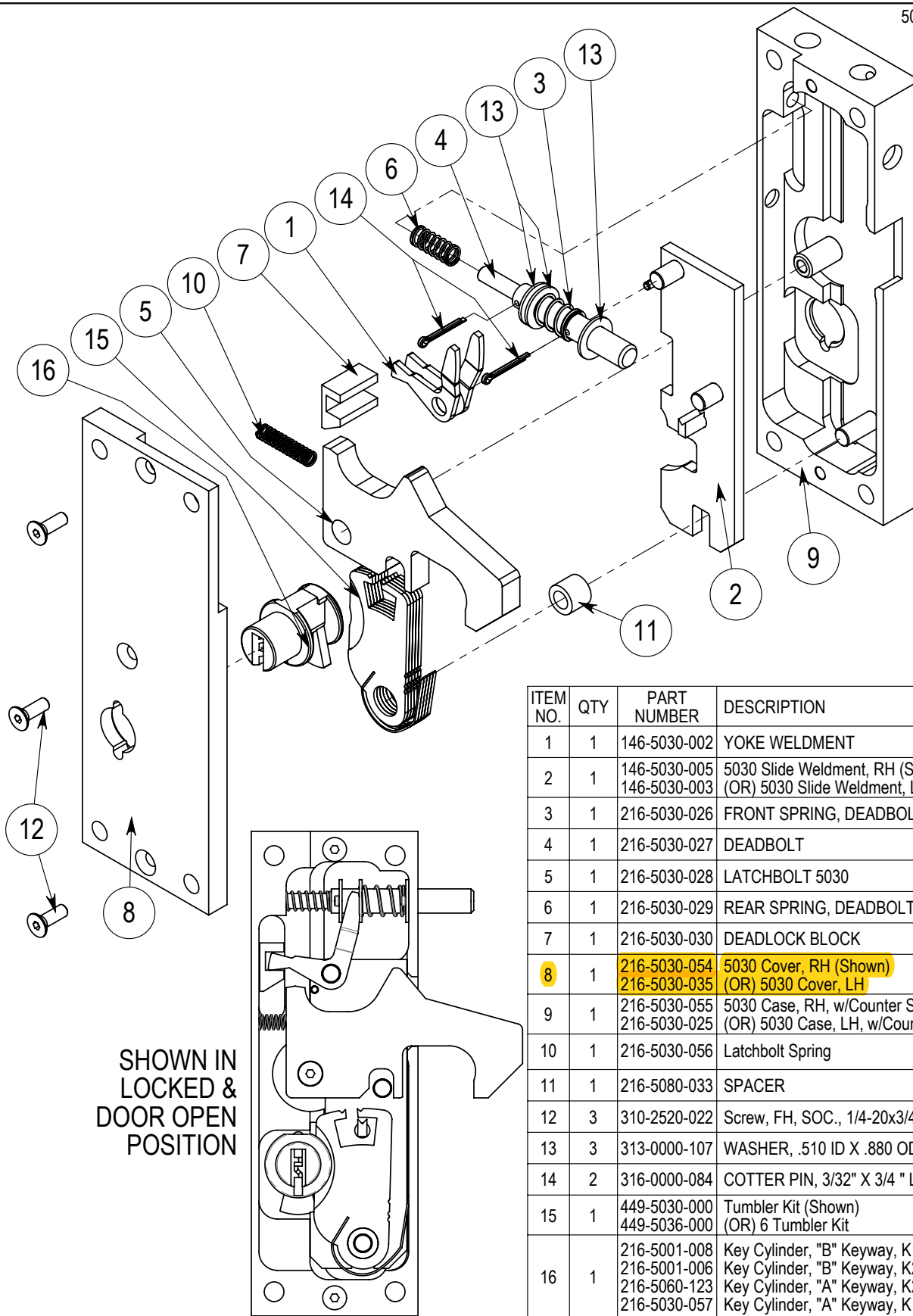
5030/5036 SERIES DEADLATCH

5030/5036 5/16



5030/5036 SERIES DEADLATCH

5030/5036 5/16

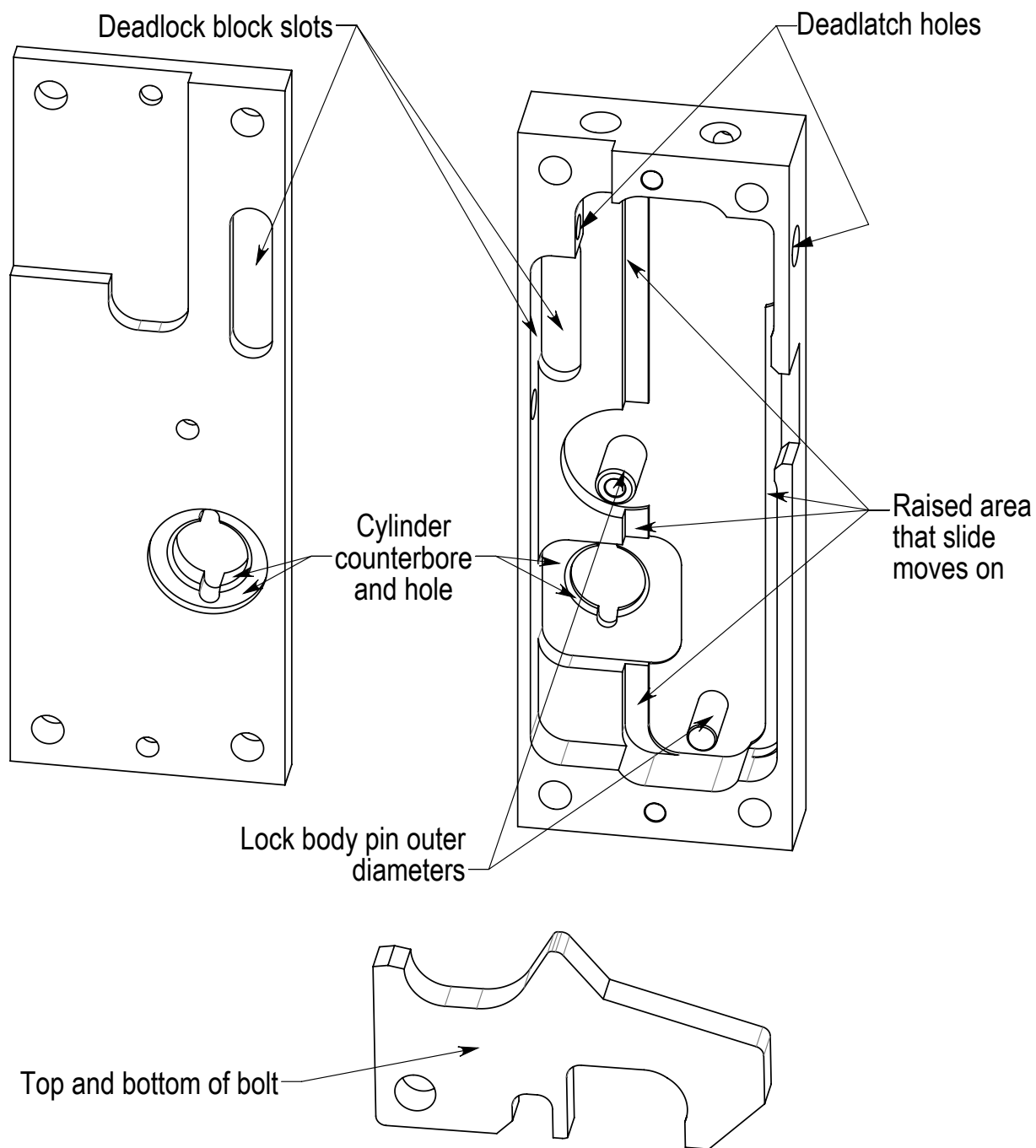


ITEM NO.	QTY	PART NUMBER	DESCRIPTION
1	1	146-5030-002	YOKE WELDMENT
2	1	146-5030-005 146-5030-003	5030 Slide Weldment, RH (Shown) (OR) 5030 Slide Weldment, LH
3	1	216-5030-026	FRONT SPRING, DEADBOLT
4	1	216-5030-027	DEADBOLT
5	1	216-5030-028	LATCHBOLT 5030
6	1	216-5030-029	REAR SPRING, DEADBOLT
7	1	216-5030-030	DEADLOCK BLOCK
8	1	216-5030-054 216-5030-035	5030 Cover, RH (Shown) (OR) 5030 Cover, LH
9	1	216-5030-055 216-5030-025	5030 Case, RH, w/Counter Sinks (Shown) (OR) 5030 Case, LH, w/Counter Sinks
10	1	216-5030-056	Latchbolt Spring
11	1	216-5080-033	SPACER
12	3	310-2520-022	Screw, FH, SOC., 1/4-20x3/4, Blk Oxide
13	3	313-0000-107	WASHER, .510 ID X .880 OD X .06 THK
14	2	316-0000-084	COTTER PIN, 3/32" X 3/4" LG.
15	1	449-5030-000 449-5036-000	Tumbler Kit (Shown) (OR) 6 Tumbler Kit
16	1	216-5001-008 216-5001-006 216-5060-123 216-5030-057	Key Cylinder, "B" Keyway, K1S, 5030 Key Cylinder, "B" Keyway, K2S, 5030 Key Cylinder, "A" Keyway, K2S, 5030 Key Cylinder, "A" Keyway, K1S, 5030

5030/5036 SERIES DEADLATCH

5030 5/16

Lightly lubricate the following areas with SuperLube



MAINTENANCE INSTRUCTIONS

AIRTEQ

MECHANICAL LEVER TUMBLER LOCKS

All Airteq mechanical lever tumbler locks are designed for years of trouble-free use. No periodic maintenance or lubrication is recommended. If, however, a lock fails to perform properly, the following procedure is recommended.

- 1) Remove the lock cover.
- 2) Carefully remove the tumbler stack. Mark each tumbler position on the tumbler with a permanent marker for ease of reassembly.
- 3) Remove the remaining components.
- 4) Clean the case, cover and other components with alcohol or acetone and a clean lint free cloth.
- 5) Lightly lubricate the following areas with a multi-purpose synthetic lubricant with teflon, similar to "Synco Super Lube with Teflon":
 - a) All machined surfaces at the bottom of the lock case.
 - b) The I.D. of the key cylinder hole in the case.
 - c) The I.D. of the key cylinder hole in the cover and the counterbore around it.
- 6) Carefully reassemble the lock. Be sure that the tumbler stack has been properly reassembled.
- 7) 5070 Series locks only:

Lubricate the surfaces where the actuator pawl and slide weldment interface.

WARNING:

- 1) Never use WD40 or similar silicone based lubricants.
- 2) Never use graphite powder as a lubricant.
- 3) Never lubricate the lever tumblers.

KEYS AND LEVER TUMBLERS

- 1) Key wear can cause improper operation of the lock and may damage the lock's lever tumblers. Keys in constant use should be periodically compared to a similar new key. When grooves due to wear are noted in the steps on the key bit, the old key should be replaced.
- 2) When rekeying is performed, new tumbler stacks should be purchased as a set including a new key. This enables Airteq to maintain complete keying records.