



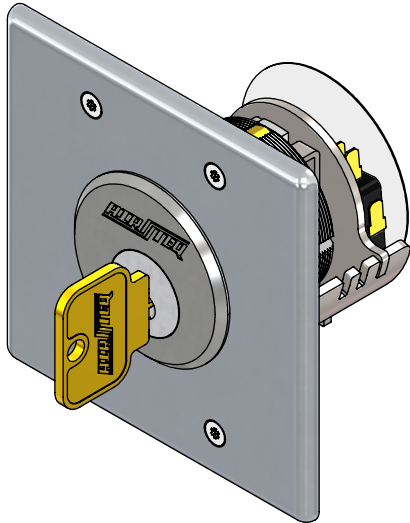
AIRTEQ SYSTEMS

www.airteqsystems.com

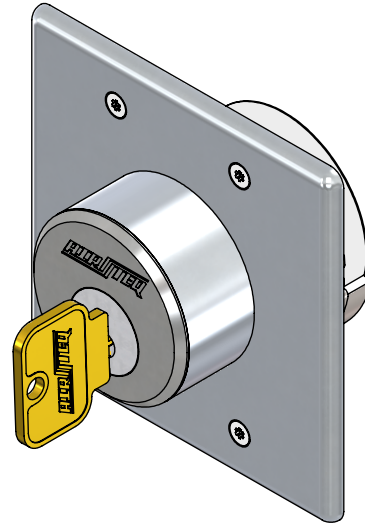
800-466-3007

6500 MOGUL KEY SWITCH

4/14/19



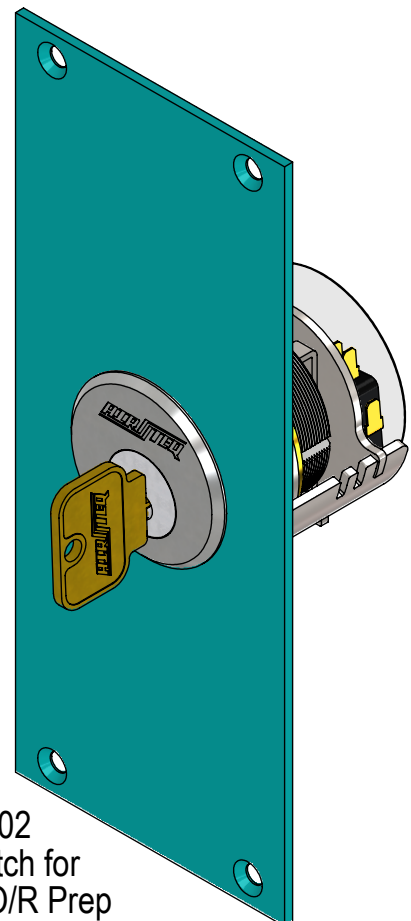
135-6500-000
Mogul Key Switch Box Mount



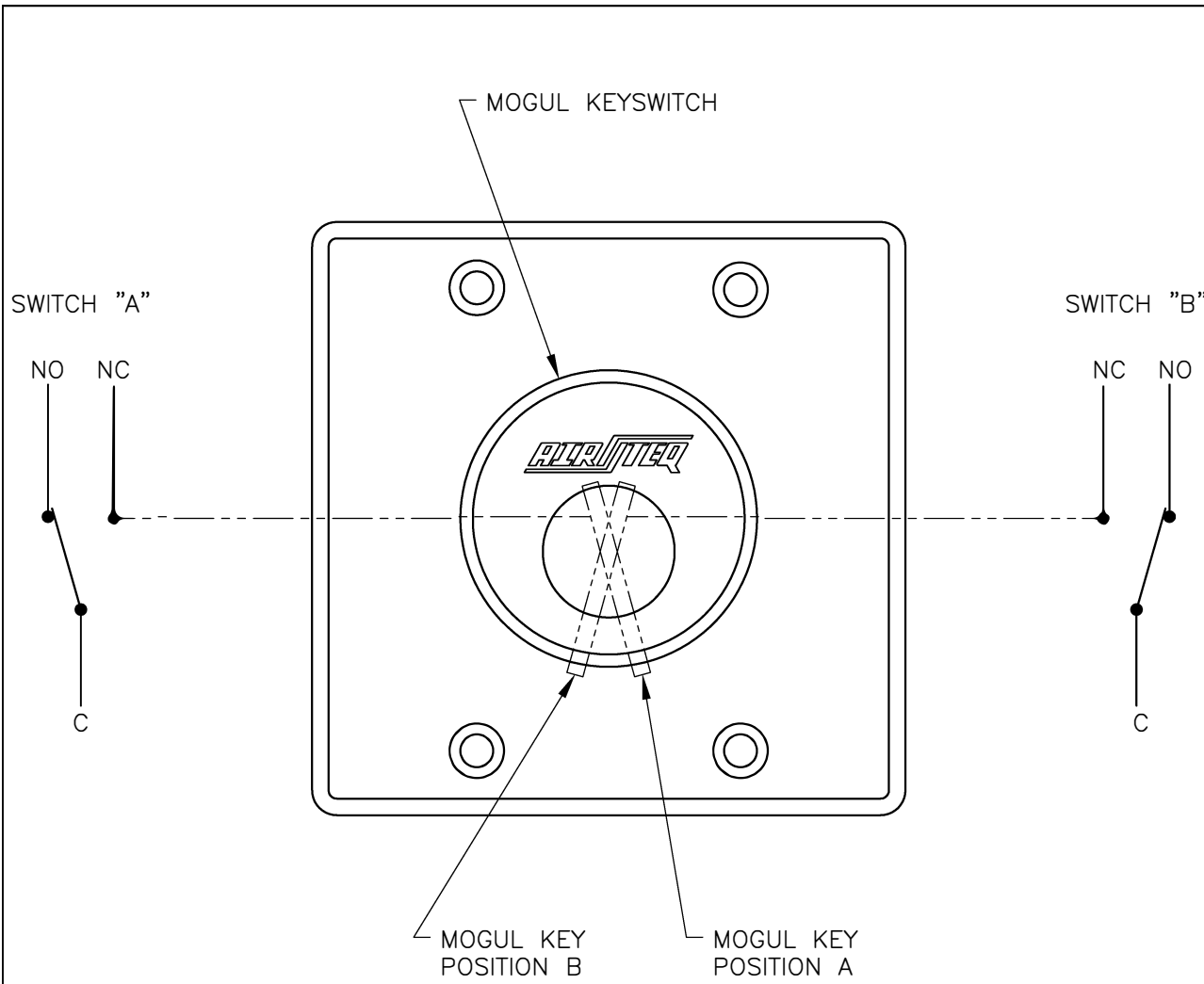
135-6500-000K2S
Mogul Key Switch, Shallow Back (K2S)



135-6500-001
Faceplate, Mogul Key Switch,
Masonry Anchor Mount



135-6500-002
Mogul Key Switch for
Standard Mogul O/R Prep



REVISIONS				
REV	ECN	DESCRIPTION	DRAWN	CHK

NOTE:
 WHEN MOGUL KEY IS IN POSITION "A", SWITCH "A" IS ACTIVATED.
 WHEN MOGUL KEY IS IN POSITION "B", SWITCH "B" IS ACTIVATED.

COMPANY CONFIDENTIAL: THIS DRAWING IS THE PROPERTY OF AIRTEQ SYSTEMS AND MUST BE ACCOUNTED FOR. INFORMATION HEREON IS CONFIDENTIAL AND MUST NOT BE USED, REPRODUCED, REVEALED TO UNAUTHORIZED PERSONS OR SENT OUTSIDE THE COMPANY WITHOUT PROPER AUTHORIZATION.



TITLE WIRING DIAGRAM, 6500 MOGUL KEYSWITCH	DRAWN BY DEE
	APPROVED
	DATE 6/19/98
	SCALE NONE

© 1989 AIRTEQ SYSTEMS.	SIZE B	DWG. NO. EL-0073-B	REV
------------------------	-----------	-----------------------	-----



AIRTEQ SYSTEMS

www.airteqsystems.com

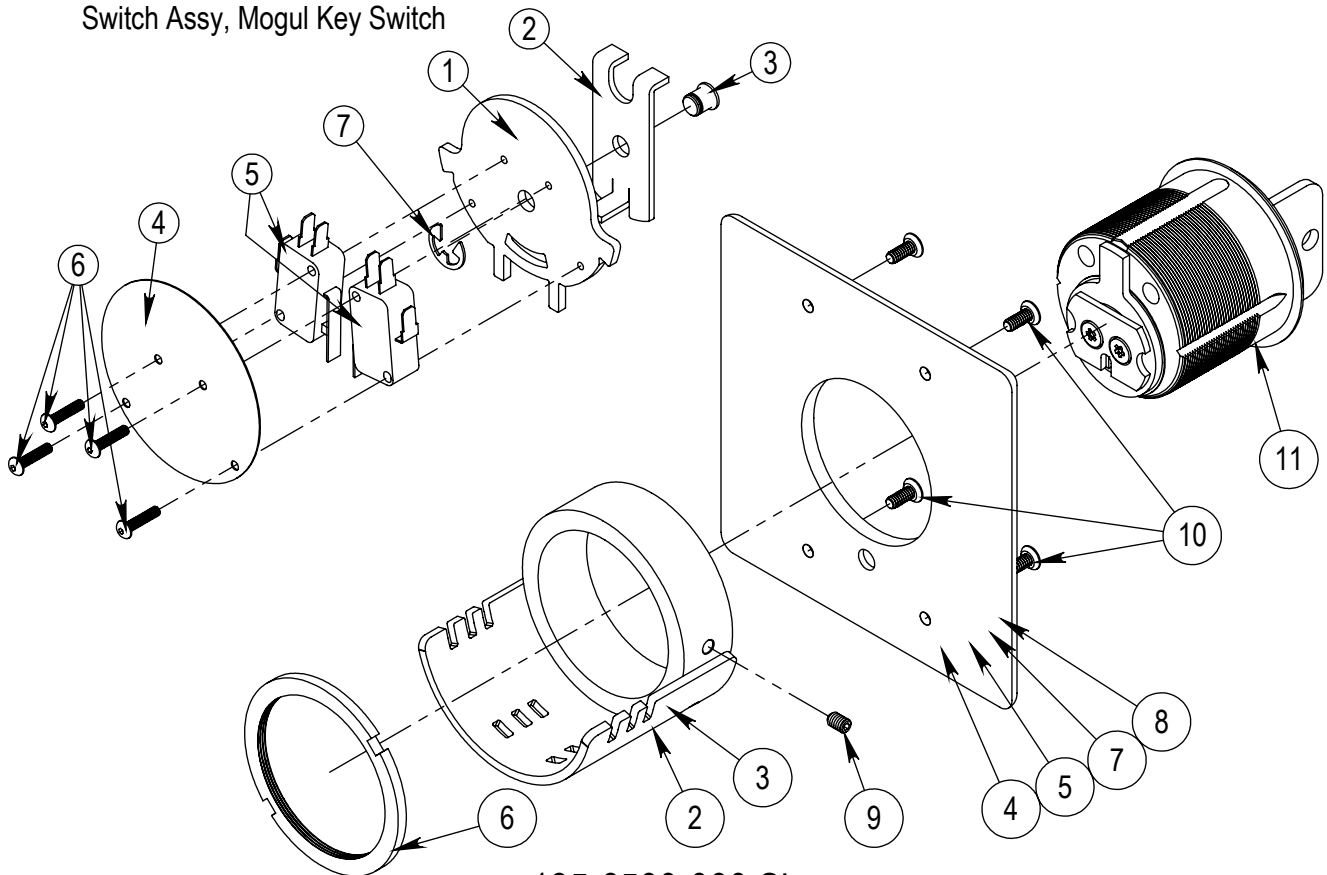
800-466-3007

6500 MOGUL KEY SWITCH

4/14/19

ITEM NO.	QTY.	PART NUMBER	DESCRIPTION
1	1	216-6500-000	SWITCH MOUNT
2	1	216-6500-001	CAM TRAILER
3	1	216-6500-005	PIVOT PIN
4	1	216-6500-007	INSULATOR
5	2	216-6500-009	SWITCH. MODIFIED, SHORTENED TRIGGER
6	4	310-0440-028	SCREW, BHCS, HEX 4-40UNC X 1/2
7	1	315-0000-003	RETAINING RING

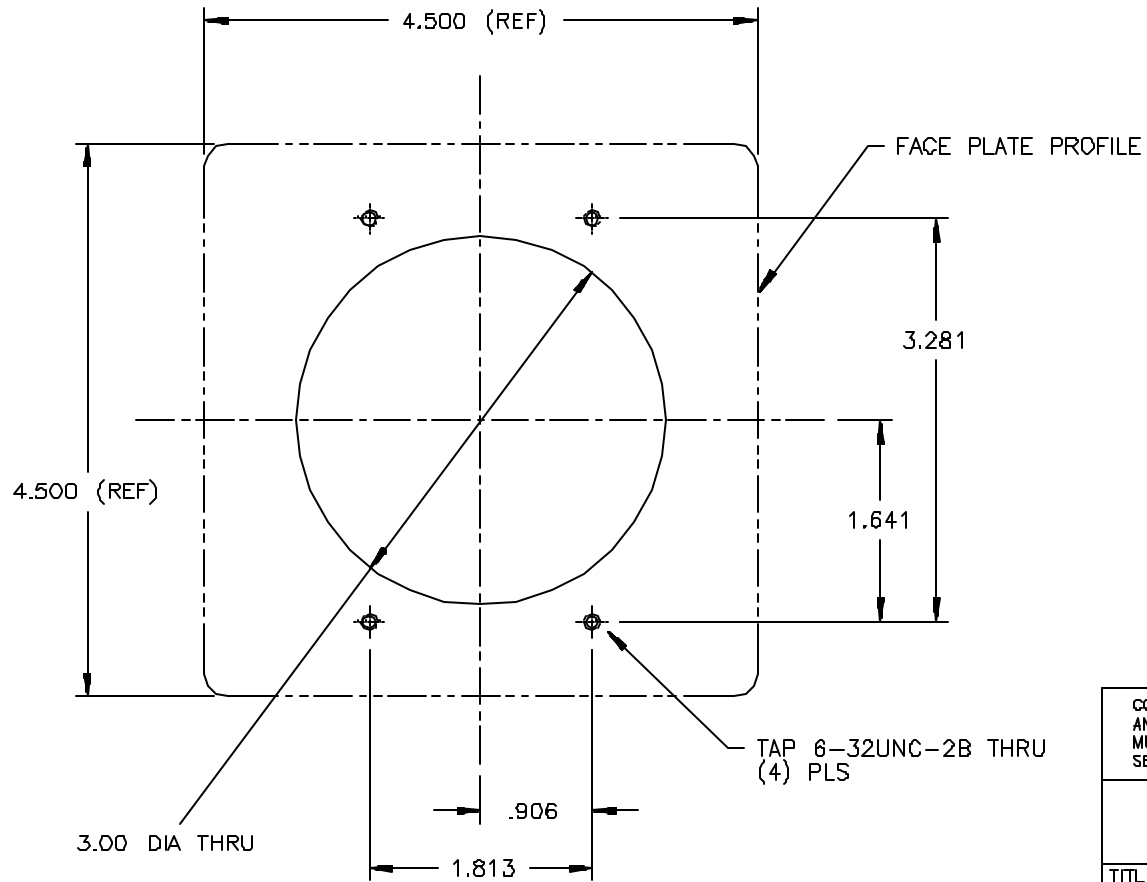
146-6500-001
Switch Assy, Mogul Key Switch



135-6500-000 Shown

ITEM NO.	PART NUMBER	DESCRIPTION	135-6500-000 QTY	135-6500-000 K2S QTY	135-6500-001 QTY	135-6500-002 QTY
	146-6500-001	Switch Assy, Mogul Key Switch	1	1	1	1
2	146-6500-000	Mogul Key Switch SLEEVE WELDMENT	1	-	1	1
3	146-6500-002	K2S Mogul Key Switch Sleeve Weldment	-	1	-	-
4	146-6500-003	Mogul KS Mount Plate to Fit Mogul O/R Rec. Prep	-	-	-	1
5	150-6500-010	Airteq Mogul Keyswitch K2S Weldment	-	1	-	-
6	216-1000-028	Mogul Cylinder, SPANNER Lock NUT	1	1	1	1
7	216-6500-004	Faceplate, Mogul Key Switch, Switch Box Mount	1	-	-	-
8	216-6500-006	Faceplate, Mogul Key Switch, Masonry Anchor Mount	-	-	1	-
9	310-0832-005	SET SCREW, 8-32 X .250	1	1	1	1
10	311-0632-012	SCREW TP FH TORX 6-32X3/8 STNLS	4	4	4	-
11	-	MOGUL CYLINDER (ORDER SEPARATELY)	1	1	1	1

REVISIONS				
REV	ECN	DESCRIPTION	DRAWN	CHK

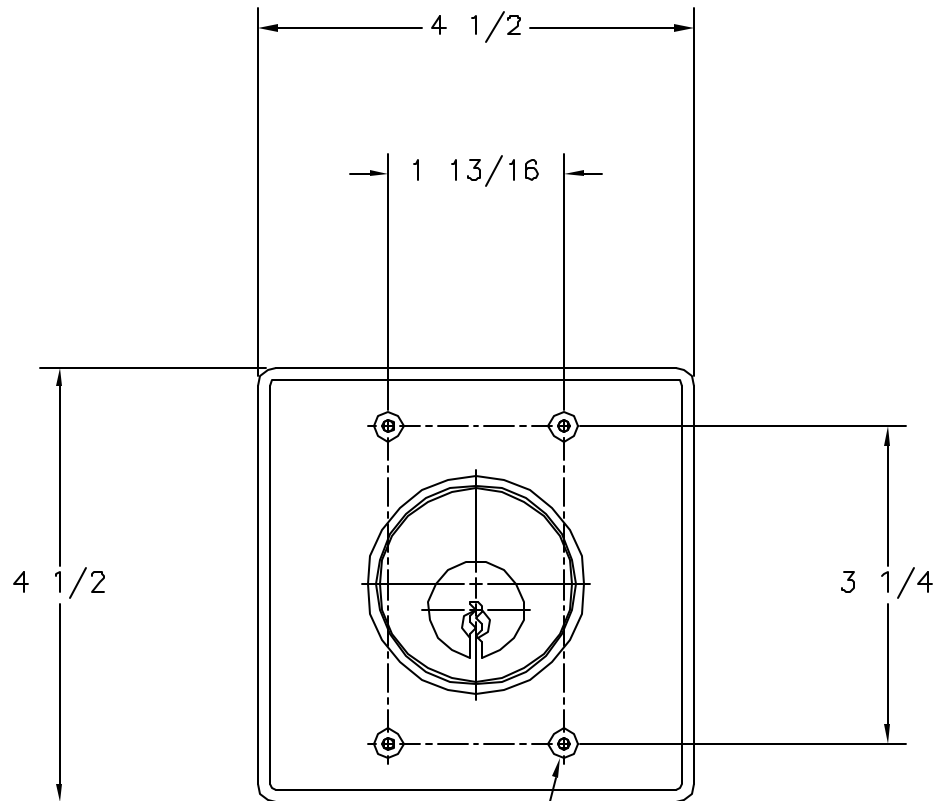


COMPANY CONFIDENTIAL: THIS DRAWING IS THE PROPERTY OF AIRTEQ SYSTEMS AND MUST BE ACCOUNTED FOR. INFORMATION HEREON IS CONFIDENTIAL AND MUST NOT BE USED, REPRODUCED, REVEALED TO UNAUTHORIZED PERSONS OR SENT OUTSIDE THE COMPANY WITHOUT PROPER AUTHORIZATION.



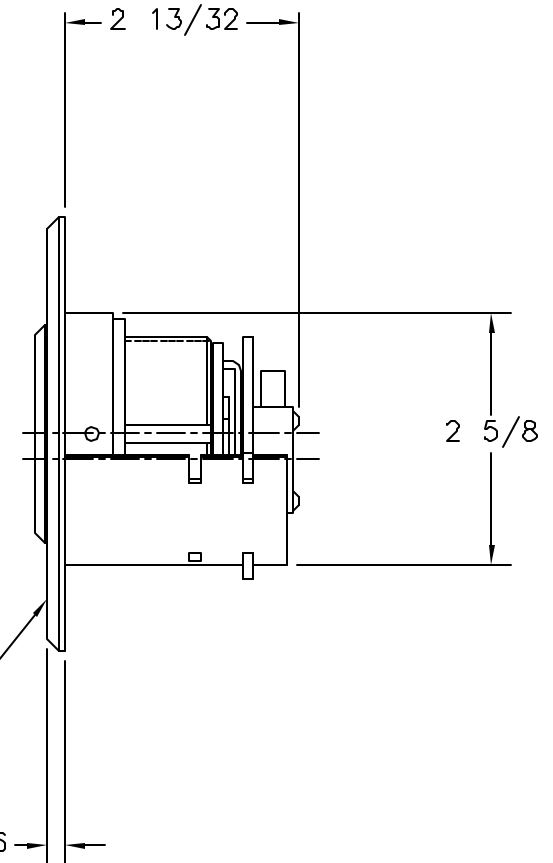
TITLE		DRAWN BY	
HOLLOW METAL MOUNTING TEMPLATE		DSG	
6500 MOGUL KEYSWITCH		APPROVED	
		DATE	
		6-7-01	
		SCALE	
		1X	
© 1989 AIRTEQ SYSTEMS.	SIZE	DWG. NO.	REV
	B		

REVISIONS				
REV	ECN	DESCRIPTION	DRAWN	CHK



6-32 FH SECURITY SCREWS
(PROVIDED)

STAINLESS STEEL
COVER PLATE



NOTES:

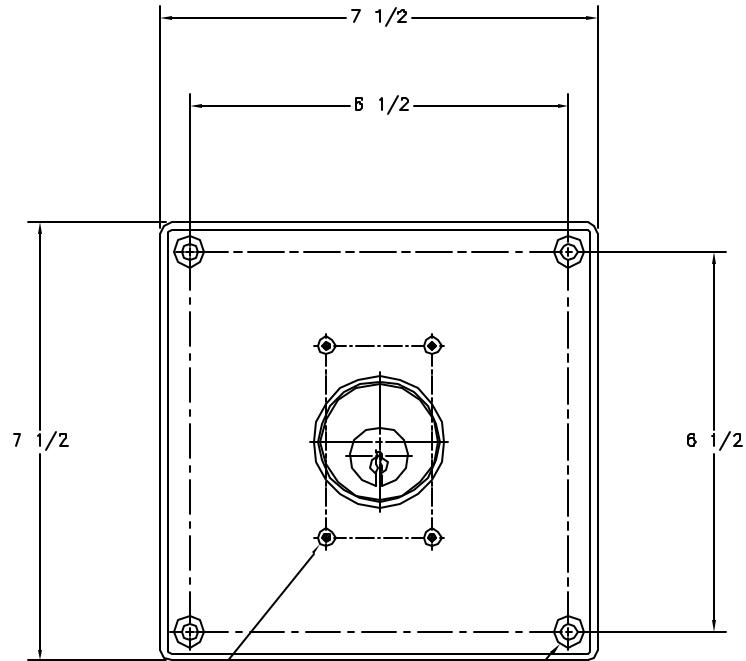
1. PROVIDED WITH TWO SPDT SWITCHES.
2. ELECTRICAL RATING OF SWITCH:
15 AMPS - 1/2 HP,
125/250 VAC.
3. NEITHER SWITCH ACTIVATED IN
NEUTRAL POSITION (KEY
REMOVED).
4. ONLY ONE SWITCH ACTIVATED
AT A TIME.

COMPANY CONFIDENTIAL: THIS DRAWING IS THE PROPERTY OF AIRTEQ SYSTEMS AND MUST BE ACCOUNTED FOR. INFORMATION HEREON IS CONFIDENTIAL AND MUST NOT BE USED, REPRODUCED, REVEALED TO UNAUTHORIZED PERSONS OR SENT OUTSIDE THE COMPANY WITHOUT PROPER AUTHORIZATION.



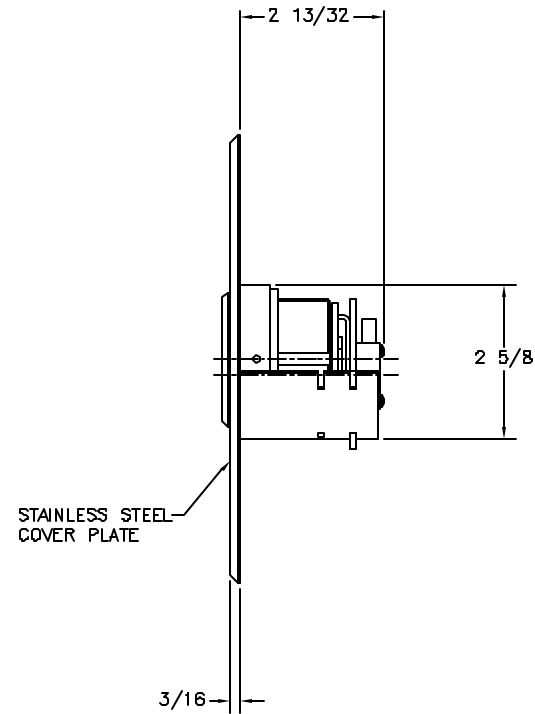
TITLE	AIRTEQ 6500 MOGUL KEYSWITCH, BOX MOUNT	DRAWN BY DEE
		APPROVED
		DATE 2/16/98
		SCALE FULL
© 1999 AIRTEQ SYSTEMS.	SIZE C	QWC. NO. 530-6500-000
		REV

REVISIONS				
REV	CON	DESCRIPTION	DATE	CHK



6-32 FH SECURITY SCREWS
(PROVIDED)

DRILLED THRU
& COUNTERSUNK
FOR 1/4" FH CON. ANCHORS
(ANCHORS NOT PROVIDED)



STAINLESS STEEL
COVER PLATE

NOTES:

1. PROVIDED WITH TWO SPDT SWITCHES.
2. ELECTRICAL RATING OF SWITCH: 15 AMPS - 1/2 HP, 125/250 VAC.
3. NEITHER SWITCH ACTIVATED IN NEUTRAL POSITION (KEY REMOVED).
4. ONLY ONE SWITCH ACTIVATED AT A TIME.

SAFETY: OPERATIONAL THE APPROVAL OF USER'S SYSTEMS AND MUST BE ASSIGNED FROM WORKSHOP TO GENERAL AND MUST NOT BE USED, REPAIRS, MODIFIED TO LIMITS, POWER OR MUST BE USED THE USUAL WORKING ATTENTION.

AIRTEQ

TITLE	AIRTEQ 6500	DRAWN BY	DEE
	MOGUL KEYSWITCH, ANCHOR MOUNT	APPROVED	
		DATE	2/27/88
		SCALE	FULL
① SHOP APPROV SYSTEMS	SIZE	FIG. NO.	REV
	D	530-6500-001	