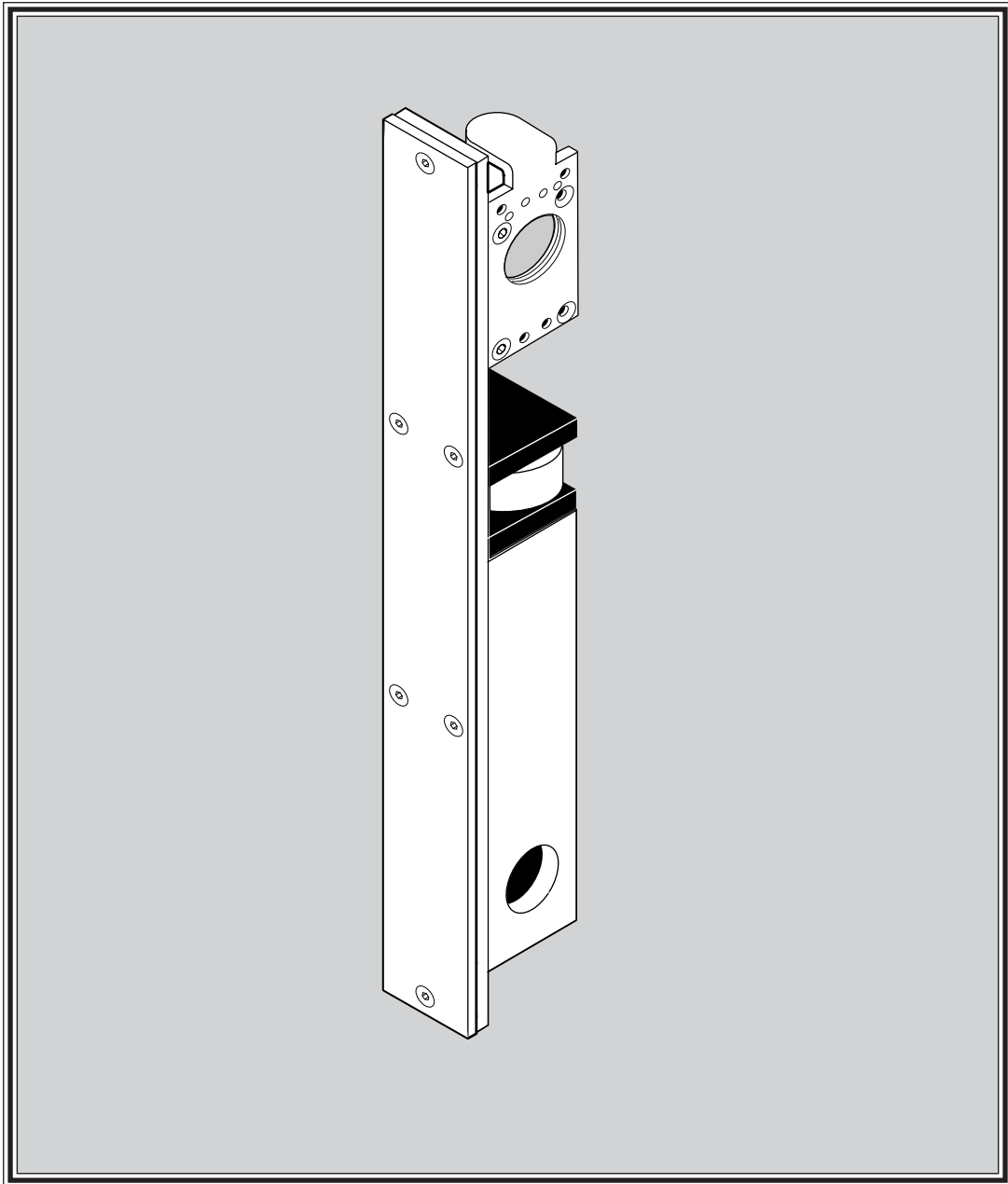




9524 SERIES LOCK

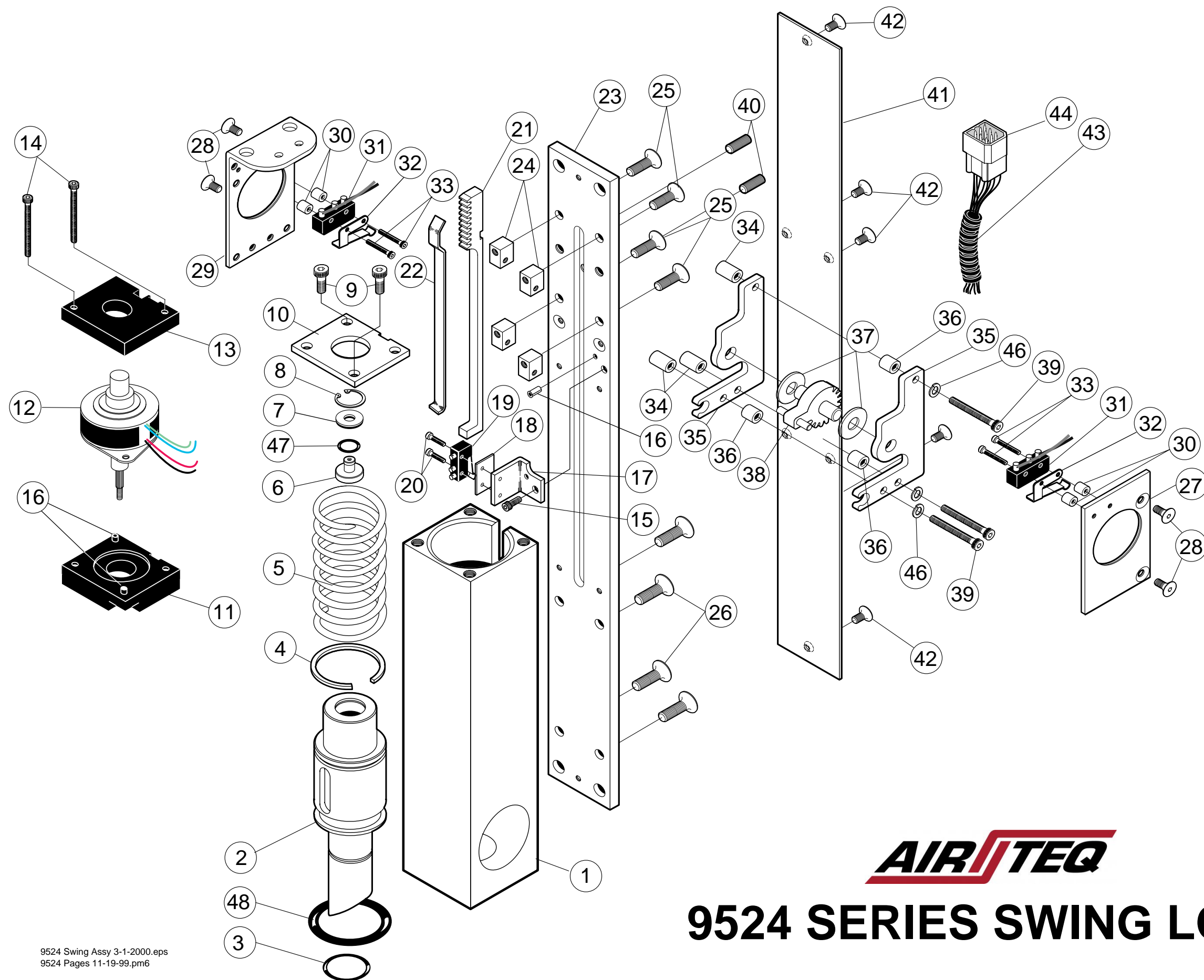


9524 SWING LOCK PARTS LIST

<u>ITEM</u>	<u>QTY</u>	<u>PART NUMBER</u>	<u>DESCRIPTION</u>
1	1	146-9500-086	ASSY, LOCK BODY
2	1	216-9500-126	LATCHBOLT
3	1	313-0000-050	O-RING, 2-016, VITON
4	1	313-0000-052	PISTON RING, 1.25 X .070
5	1	216-9524-011	SPRING
6	1	216-9524-000	DRIVE COUPLER
7	1	313-0000-094	SEALING WASHER
8	1	315-0000-046	RETAINING RING
9	2	310-1032-003	SCREW, SHCS, 10-32 X 3/8
10	1	216-9524-005	COVER
11	1	216-9524-002	MOTOR MOUNT, LOWER
12	1	340-0000-244	STEPPER MOTOR
13	1	216-9524-001	MOTOR MOUNT, UPPER
14	2	310-1032-023	SCREW, SHCS, 10-32 X 1 3/4
15	1	310-0632-006	SCREW, SHCS, 6-32 X 1/4
16	1	316-0000-058	ROLL PIN, 3/32 X 3/8
17	1	216-9524-004	SWITCH BRACKET
18	1	216-9500-025	INSULATOR PAD
19	1	160-9500-001	ASSY, LOCK STATUS SWITCH
20	2	310-0000-014	SCREW, SHCS, 2-56 x 3/8
21	1	216-9524-003	RACK
22	1	216-9524-007	ACTUATOR ROD
23	1	216-9524-006	MOUNTING PLATE
24	4**	216-9400-152	MOUNTING BLOCK
25	4	310-0832-014	SCREW, FH, SOC., 8-32 X 1/2
26	4	310-2520-019	SCREW, FH, SOC., 1/4-20 X 1/2
27	1*	216-9400-133	MORTISE CYLINDER PLATE
28	4**	310-0632-009	SCREW, FH, SOC., 6-32 X 3/8
29	1	216-9400-132	MORTISE CYLINDER PLATE, UNIVERSAL
30	4**	319-0000-052	SPACER, KEY SWITCH (KEY SWITCH MODELS ONLY)
31	2**	160-9400-020	ASSY, KEY SWITCH (KEY SWITCH MODELS ONLY)
32	2**	340-0000-133	SWITCH LEVER, MICROSWITCH, #JS-7 (KEY SWITCH ONLY)
33	4**	310-0256-002	SCREW, SHCS, 2-56 X 9/16 (KEY SWITCH MODELS ONLY)
34	3	319-0000-044	SPACER, LONG
35	2	216-9400-134	GEAR SUPPORT PLATE
36	3	319-0000-045	SPACER, GEAR
37	2	313-0000-072	WASHER, PLASTIC
38	1	146-9400-035	ASSY, GEAR, 3/16
39	3	310-0632-010	SCREW, SHCS, 6-32 X 1
40	2**	310-0832-015	SET SCREW, 8-32 X 7/16
41	1	216-9500-023	FACEPLATE, STAINLESS
41	1	216-9500-051	FACEPLATE, BRASS
42	6	311-0000-056	SCREW, TP, FH, 6-32 X 1/4, STNLS
43	1	340-0000-205	SPLIT LOOM, 5"
44	1	SEE WIRING DIAGRAM	ASSY, 9 PIN MOLEX CONNECTOR
45	1	216-9400-206	WIRE RETAINER, 5/16
46	1	313-0000-088	LOCKWASHER, #6
47	1	313-0000-103	O-RING, 2-009 70D
48	1	313-0000-116	SEAL, U-CUP

* USED ON KEYED BOTH SIDES MODELS ONLY

** DIVIDE QTY BY (2) FOR KEYED ONE SIDE MODELS



AIR/TEQ

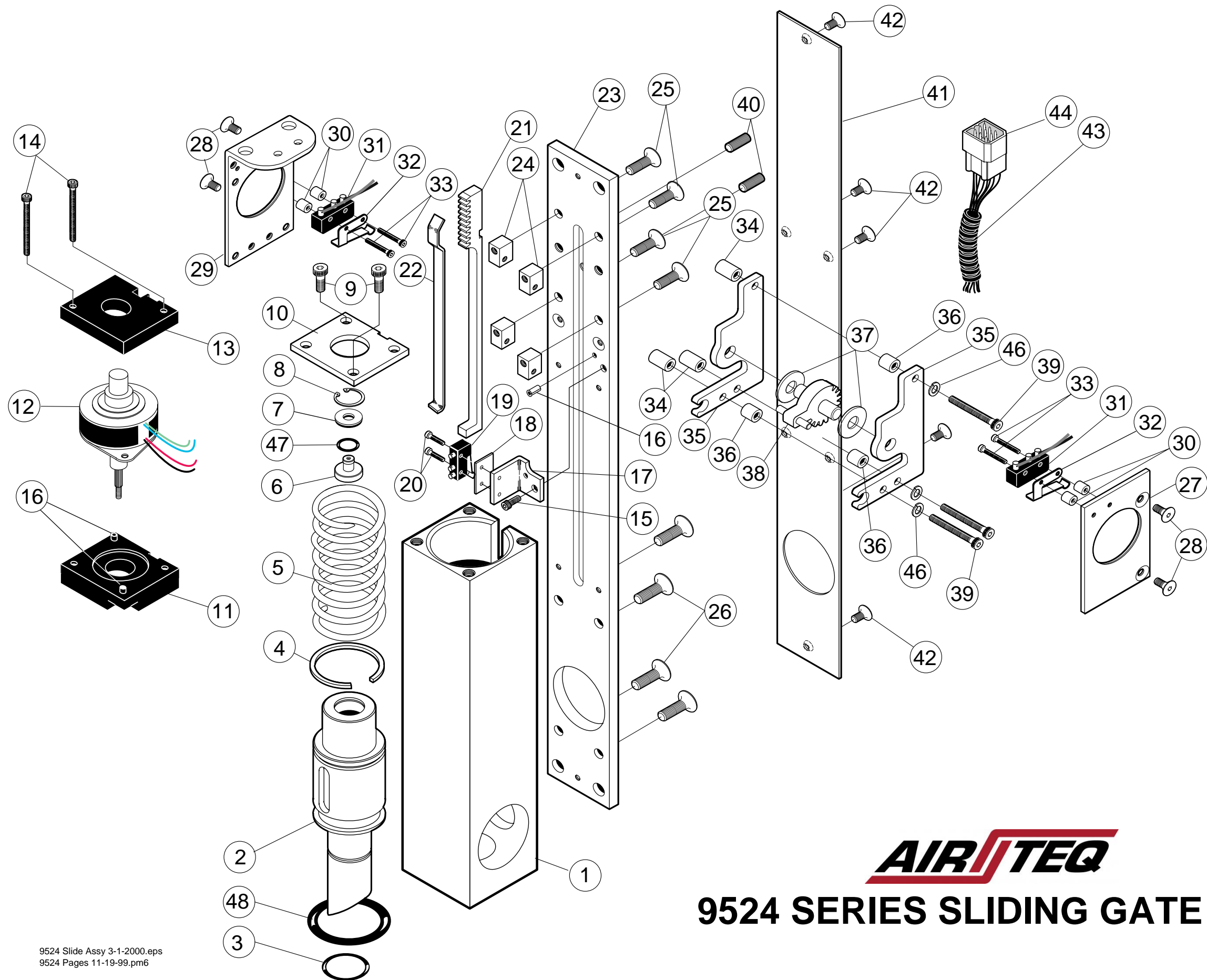
9524 SERIES SWING LOCK

9524 SLIDE LOCK PARTS LIST

<u>ITEM</u>	<u>QTY</u>	<u>PART NUMBER</u>	<u>DESCRIPTION</u>
1	1	216-9524-087	LOCK BODY, MODIFIED
2	1	216-9500-090	LATCHBOLT, MODIFIED
3	1	313-0000-050	O-RING, 2-016, VITON
4	1	313-0000-052	PISTON RING, 1.25 X .070
5	1	216-9524-011	SPRING
6	1	216-9524-000	DRIVE COUPLER
7	1	313-0000-094	SEALING WASHER
8	1	315-0000-046	RETAINING RING
9	2	310-1032-003	SCREW, SHCS, 10-32 X 3/8
10	1	216-9524-005	COVER
11	1	216-9524-002	MOTOR MOUNT, LOWER
12	1	340-0000-244	STEPPER MOTOR
13	1	216-9524-001	MOTOR MOUNT, UPPER
14	2	310-1032-023	SCREW, SHCS, 10-32 X 1 3/4
15	1	310-0632-006	SCREW, SHCS, 6-32 X 1/4
16	1	316-0000-058	ROLL PIN, 3/32 X 3/8
17	1	216-9524-004	SWITCH BRACKET
18	1	216-9500-025	INSULATOR PAD
19	1	160-9500-001	ASSY, LOCK STATUS SWITCH
20	2	310-0000-014	SCREW, SHCS, 2-56 x 3/8
21	1	216-9524-003	RACK
22	1	216-9524-007	ACTUATOR ROD
23	1	216-9524-091	MOUNTING PLATE, MODIFIED
24	4**	216-9400-152	MOUNTING BLOCK
25	4	310-0832-014	SCREW, FH, SOC., 8-32 X 1/2
26	4	310-2520-019	SCREW, FH, SOC., 1/4-20 X 1/2
27	1*	216-9400-133	MORTISE CYLINDER PLATE
28	4**	310-0632-009	SCREW, FH, SOC., 6-32 X 3/8
29	1	216-9400-132	MORTISE CYLINDER PLATE, UNIVERSAL
30	4**	319-0000-052	SPACER, KEY SWITCH (KEY SWITCH MODELS ONLY)
31	2**	160-9400-020	ASSY, KEY SWITCH (KEY SWITCH MODELS ONLY)
32	2**	340-0000-133	SWITCH LEVER, MICROSWITCH, #JS-7 (KEY SWITCH ONLY)
33	4**	310-0256-002	SCREW, SHCS, 2-56 X 9/16 (KEY SWITCH MODELS ONLY)
34	3	319-0000-044	SPACER, LONG
35	2	216-9400-134	GEAR SUPPORT PLATE
36	3	319-0000-045	SPACER, GEAR
37	2	313-0000-072	WASHER, PLASTIC
38	1	146-9400-035	ASSY, GEAR, 3/16
39	3	310-0632-010	SCREW, SHCS, 6-32 X 1
40	2**	310-0832-015	SET SCREW, 8-32 X 7/16
41	1	216-9500-067	FACEPLATE, MODIFIED, STAINLESS
42	6	311-0000-056	SCREW, TP, FH, 6-32 X 1/4, STNLS
43	1	340-0000-205	SPLIT LOOM, 5"
44	1	SEE WIRING DIAGRAM	ASSY, 9 PIN MOLEX CONNECTOR
45	1	216-9400-206	WIRE RETAINER, 5/16
46	1	313-0000-088	LOCK WASHER, #6
47	1	313-0000-103	O-RING, 2-009 70D
48	1	313-0000-116	SEAL, U-CUP

* USED ON KEYED BOTH SIDES MODELS ONLY

** DIVIDE QTY BY (2) FOR KEYED ONE SIDE MODELS



AIR/TEQ
9524 SERIES SLIDING GATE LOCK

9524 SERIES LOCK LUBRICATION/SEAL REPLACEMENT

The 9524 Series Lock is lubricated at the factory and should require no further lubrication. Lubrication is only required when replacing the lock seals. Extensive testing has shown that the lock seals should last 5 years under normal operating conditions. Should the seals ever need replacing, a seal replacement kit is available (AIRTEQ PART NUMBER 400-9524-000).

TO REPLACE LOCK SEALS

1. Remove latchbolt from lock body and remove old piston ring and O-ring .
2. Carefully clean latchbolt and lock body bores with solvent. DO NOT scratch piston or lock body bores.
3. After parts are clean, lightly lubricate new O-ring with lubricant provided and install on latchbolt. Install new piston ring on latchbolt.
4. Lightly lubricate the lock body bores with lubricant provided. Carefully insert latchbolt assembly into lock body. DO NOT tear the O-ring as it enters the bores or passes by the notch in lock body. DO NOT scratch lock body bores.
5. Reassemble lock and check for proper operation.

NOTE:

Lubricant provided is SYNCO SUPER LUBE WITH TEFLON. Use only approved lubricant.

9524 SERIES LOCK
RECOMMENDED SPARE PARTS LIST

<u>PART NUMBER</u>	<u>DESCRIPTION</u>
340-0000-244	STEPPER MOTOR
160-9400-013	ASSY, LOCK STATUS SWITCH
160-9400-020*	ASSY, KEY SWITCH
340-0000-133	SWITCH LEVER
216-9524-011	SPRING
400-9524-000	SEAL KIT, 9524
340-0000-209	TERMINAL, MALE
125-0000-095 (95-230-0) or	L.I.M. MODULE W/RLB
125-0000-095 (95-230-1)	L.I.M. MODULE WO/RLB

***NOT USED ON ALL MODELS**



LOCK MAINTENANCE INFORMATION

ELECTRO-MECHANICAL LOCKING DEVICES

A. Lubrication and cleaning

1. Each lock is well lubricated at the time of assembly. However, all lubricants deteriorate eventually and need replacing on a regularly scheduled basis in order to prevent equipment failure. Airteq Systems recommends cleaning and lubricating each type of lock according to the following instructions approximately every (2) years. (Yearly for locks in high use areas).

9424 SERIES LOCK:

Remove the side cover plate and lubricate the angled ramp surface on the sideplate that the deadlatch bolt dowel pin rides against. Lubricate the stop side of the deadlatch bolt (back side). When replacing the side cover, hold the bolt slightly retracted by rotating and holding the manual release mechanism gear with one finger. This insures that the deadlatch limit switch operating lever will not be trapped between the cover and the actuator plate. The lower lock mechanism should be checked and cleaned once a year (or more often if special conditions exist) for accumulated dirt and other debris that would interfere with proper operation. Lubrication of upper lock mechanism is not necessary nor recommended.

9624 SERIES LOCK:

Remove the slide cover. Remove the housing cover. Remove the slide assembly. Clean and re-lubricate the slide with a thin coating of recommended lubricant on the following surfaces:

- a.) The 45° angled surface that contacts the deadbolt.
- b.) The flat "shelf" that lifts the back of the latchbolt.
- c.) The two small areas where the slide contacts the back wall of the slide cavity.
- d.) The edges of the two "rails" which contact the side of the right side cover.
- e.) The front and rear faces of the slide which contact the slide cavity walls.

When replacing the slide assembly, hold the latchbolt retracted into the lock housing while inserting the slide assembly near the top of the cavity so that it drops in above the lock status switch lever arm and not on top of it. Replace the housing cover and slide cover and fasten securely. Lubrication of the upper lock mechanism is not necessary nor recommended.

9724 SERIES LOCK:

Remove one side cover plate and lubricate the deadbolt shaft and cam surface. Lubricate the latchbolt shaft and the stop sides of both bolts.

9724P SERIES LOCK: (PARACENTRIC KEYING)

Remove one side cover plate and lubricate the deadbolt shaft and cam surface. Lubricate the latchbolt shaft and the stop sides of both bolts.

KEYS AND LEVER TUMBLERS:

- 1) Key wear can cause improper operation of the lock and may damage the lock's lever tumblers. Keys in constant use should be periodically compared to a similar new key. When grooves due to wear are noted in the steps on the key bit, the old key should be replaced.
- 2) When rekeying is performed, new tumbler stacks should be purchased as a set including a new key. This enables Airteq to maintain complete keying records.

WARNING:

- 1) Never use WD40 or similar silicone based lubricants.
- 2) Never use graphite powder as a lubricant.
- 3) Never lubricate the lever tumblers.

ALL LOCKS:

Lubricate the beveled surfaces of all lock bolts with stick lubricant as required.

2. RECOMMENDED LUBRICANTS:

Multipurpose teflon based grease: Lubricate internal moving parts with SYNCO SUPER LUBE WITH TEFLON or equivalent.

Stick lubricant: Lubricate the beveled surfaces of all latch bolts and strikes with stick lubricant as required. Use PANEF WHITE STICK LUBRICANT WITH SILICONE or equivalent.

B. Electrical:

1. The electrical system of this lock is operated on regulated 24VDC (± 2 V) current. Any other voltage or current condition is not acceptable.

TROUBLESHOOTING

9424, 9524, 9624 AND 9724 LOCKS

If the lock is not working properly, the following chart may be used as a guide to locate and correct the problem.

Because the lock receives its signal from the electronic control system, a thorough check of the control system should be conducted. Using a volt/ohm meter known to be accurate, verify the correct power signal input at the appropriate connector pin. If the proper electronic signal is not evident, begin checking “upstream” from the connector. If the electronic signal input is correct, the problem is within the locking device, use the following chart to locate and correct the problem.

The recommended voltage at the lock is 24 VDC \pm 2V. If the correct voltage is not evident, begin checking “upstream” from the lock. If the voltage is correct, the problem is within the locking device or it's logic interface module, use the following chart to locate and correct the problem.

PROBLEM	CHECK
LATCHBOLT WILL NOT RETRACT	<ul style="list-style-type: none"> *MECHANICAL INTERFERENCE *POWER INPUT TO L.I.M. (12pin connector) (24 VDC should be momentarily present on pin 2 at the initiation of an unlock request, momentarily present on pin 3 at the initiation of a full cycle request and constantly present on pin 4.) *BROKEN OR LOOSE WIRING *IF CORRECT VOLTAGE IS PRESENT ON REQUIRED PINS AND LOCK DOES NOT FUNCTION, LOGIC INTERFACE MODULE OR MOTOR MAY BE FAULTY. *FAULTY KEY SWITCH
LATCHBOLT WILL NOT EXTEND	<ul style="list-style-type: none"> *MECHANICAL INTERFERENCE *POWER INPUT TO L.I.M. (12pin connector) (24 VDC should be momentarily present on pin 1 at the initiation of an lock request, momentarily present on pin 3 at the initiation of a full cycle request and constantly present on pin 4.) *BROKEN OR LOOSE WIRING *IF CORRECT VOLTAGE IS PRESENT ON REQUIRED PINS AND LOCK DOES NOT FUNCTION, LOGIC INTERFACE MODULE OR MOTOR MAY BE FAULTY. *FAULTY KEY SWITCH
LOCK RETRACTS BUT WITH LOW STALL FORCE	<ul style="list-style-type: none"> *BAD CONNECTION TO ONE MOTOR COIL. *LOW VOLTAGE. (Required voltage is 24 VDC \pm2V)
MANUAL OVERRIDE NOT WORKING PROPERLY	<ul style="list-style-type: none"> *MECHANICAL INTERFERENCE *PROPER ENGAGEMENT OF KEY CYLINDER CAM IN LOCK
DOOR POSITION SIGNAL NOT GIVEN	<ul style="list-style-type: none"> *BROKEN OR LOOSE WIRING (SEE WIRING DIAGRAM)
LATCHBOLT POSITION SIGNAL NOT GIVEN	<ul style="list-style-type: none"> *BROKEN OR LOOSE WIRING (SEE WIRING DIAGRAM)