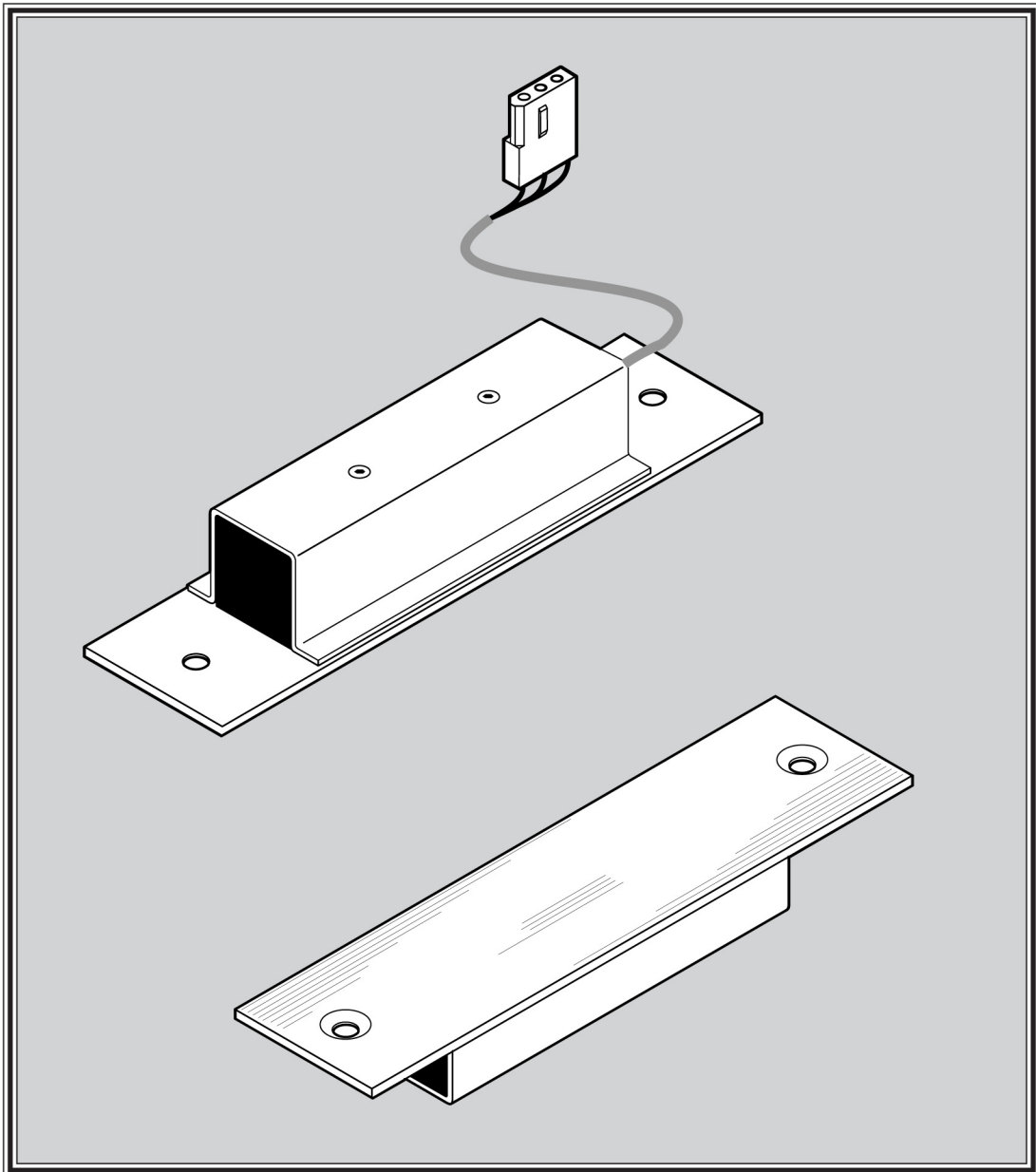
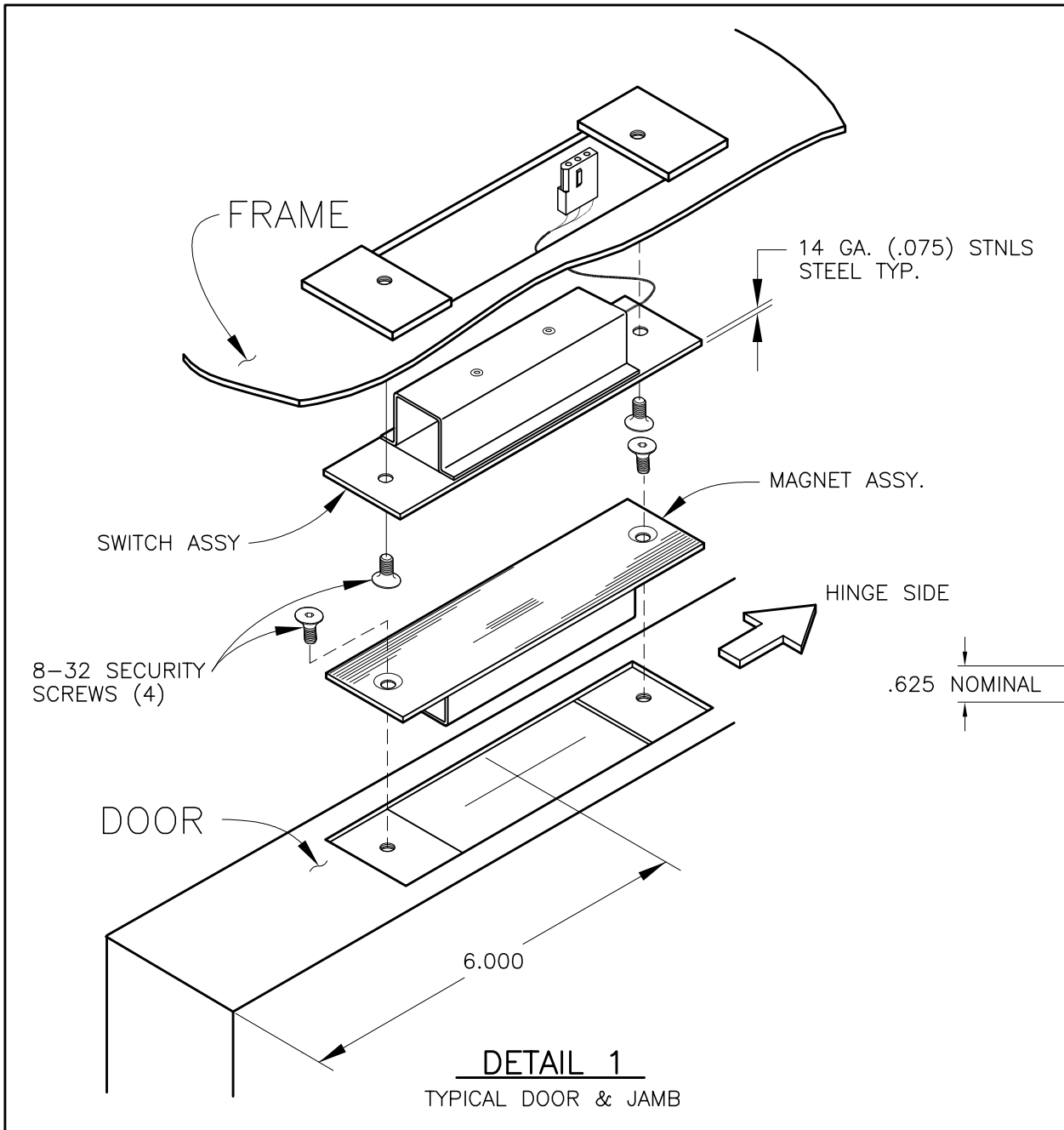


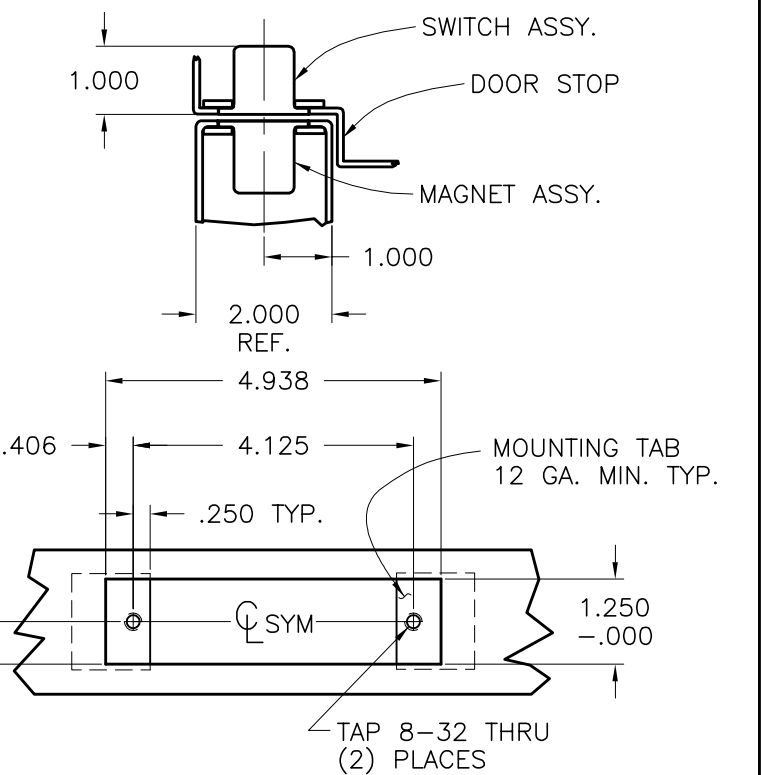


**6200 SERIES
DOOR POSITION SENSOR**





REVISIONS				
REV	ECN	DESCRIPTION	DRN	CHK



DETAIL 2
TYPICAL DOOR & JAMB

AIRTEQ™

TITLE		DRAWN BY <i>GR</i>	
TEMPLATE, 6200 SERIES, DOOR POSITION SENSOR		APPROVED	
© 1989 AIRTEQ SYSTEMS.		DATE 2-12-96	
SIZE B		SCALE NONE	
DWG. NO. 530-6200-000		REV	

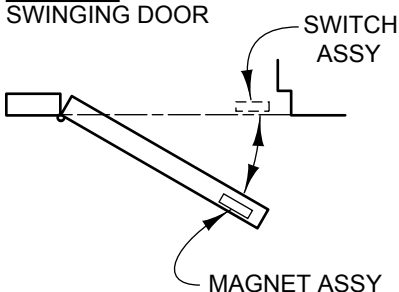
INSTALLATION INSTRUCTIONS

6200 SERIES DPS

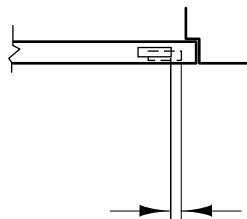
1. The 6200 Series DOOR POSITION SENSOR is factory set for nominal operation. The SWITCH and MAGNET ASSEMBLIES are to be installed with the colored registration dots aligned.
2. Connect lock Molex connector (item #3) to switch assembly Molex connector (item #4). SWITCH ASSEMBLY connector must be field assembled per wiring diagram (fig. #2).
3. Install SWITCH ASSEMBLY (item #1) in jamb grout box using two (2) 8-32 x 1/4 flat head security screws provided (item #5).
4. Install MAGNET ASSEMBLY (item #2) in door mortise box using two (2) 8-32 x 1/4 flat head security screws provided (item #5).
5. Activate sensor by opening and closing door. Sensor should calibrate as follows:
 - X axis = .125" (approx.) minimum door Travel To Alarm (TTA)
 - Y axis = misalignment should be less than .062"
 - Z axis = typical gap of .188", maximum allowable .312"
6. If sensor does not calibrate properly, check alignment between the SWITCH ASSEMBLY and MAGNET ASSEMBLY in the "Y" direction. Adjust SWITCH BODY (item # 6) within the SWITCH HOUSING (item #7) to compensate for misalignment of over .062" in the "Y" direction. Adjustment is made by loosening the two (2) set screws (item #8) and moving the SWITCH BODY within the SWITCH HOUSING approximately .062" in the appropriate direction. Re-tighten set screws to secure SWITCH BODY in adjusted position. If sensor is still not calibrated properly, repeat adjustment procedure in .062" increments until calibration is achieved. If adjustment of SWITCH BODY is not sufficient for proper calibration, the MAGNET BODY (item #9) may also be adjusted.

NOTE :Set screw threads have been coated with Loctite "Small Screw Threadlocker Compound 222". They may be adjusted several times before threads must be re-coated.

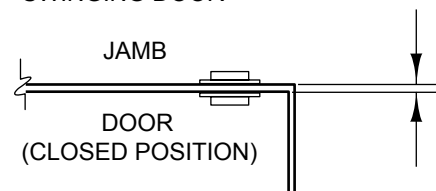
X AXIS
SWINGING DOOR



Y AXIS
SWINGING DOOR



Z AXIS
SWINGING DOOR



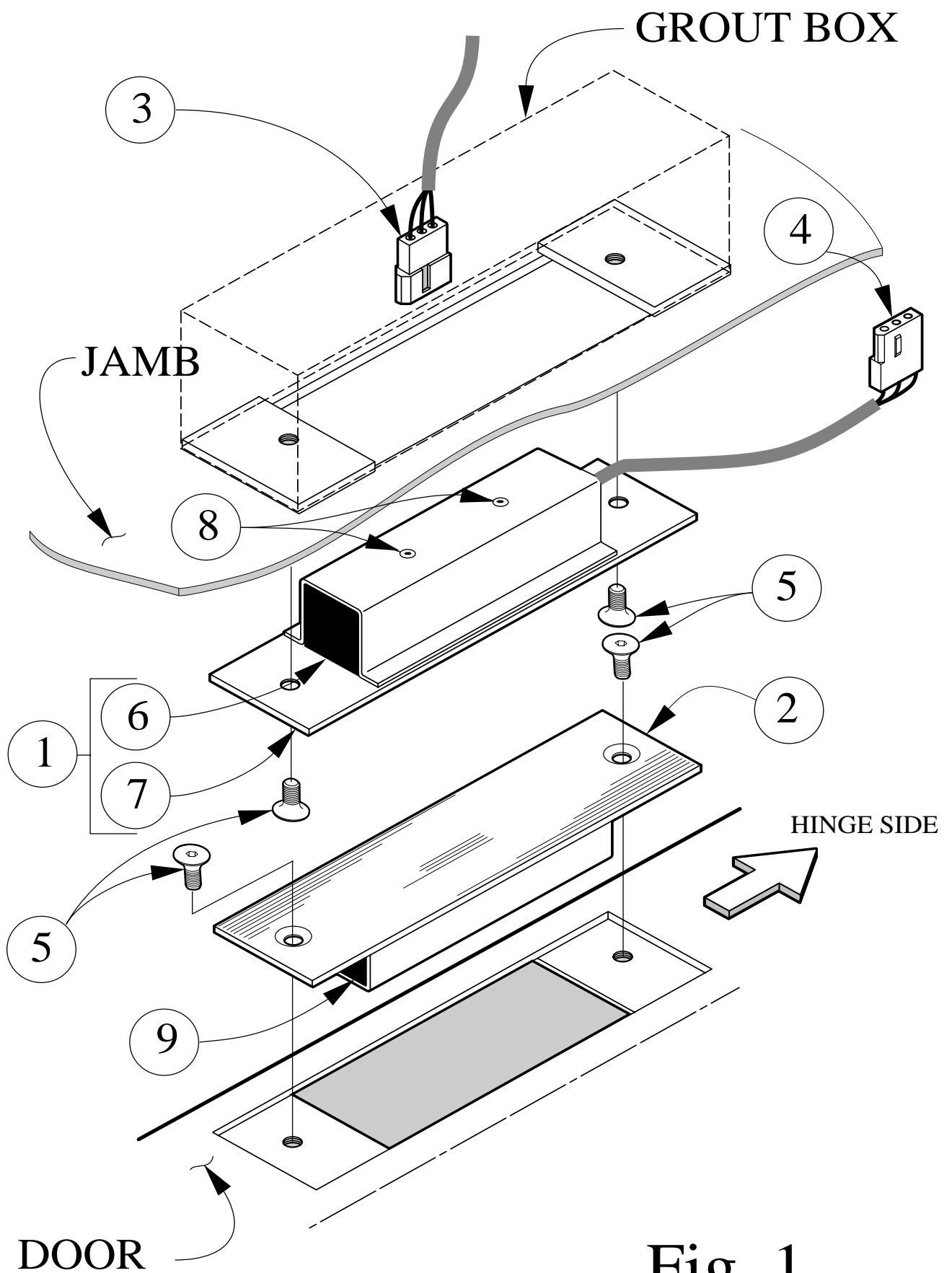
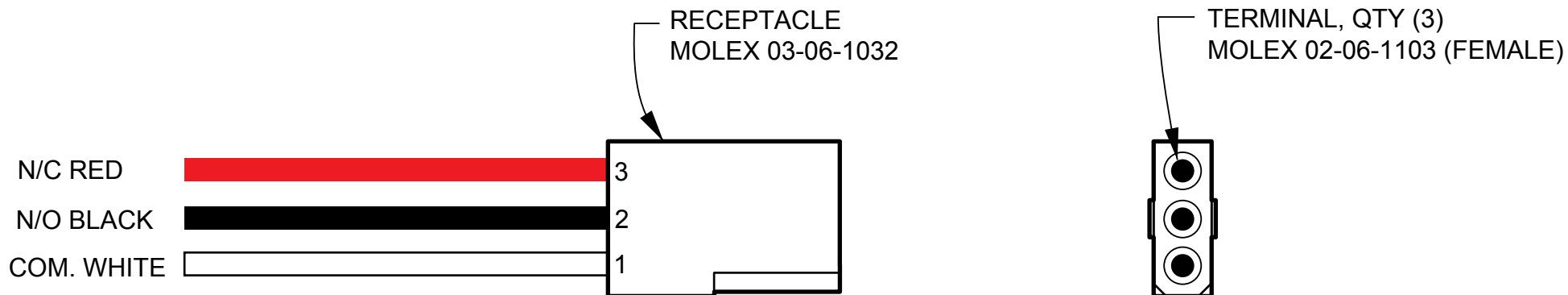


Fig. 1



Electrical Specifications:

Max Voltage: 30 Volts

Max Current: .010 Amps

Max Power: 0.3 Watts

4'-6" Wire Length Supplied on DPS



WIRING DIAGRAM, DPS 6200

Fig. 2